

## Recombinant Human COLEC11 Protein, GST-tagged

**Cat. No.** COLEC11-1668H    **Lot. No.** (See product label)

### SPECIFICATION

<b>Product Overview</b>	Human COLEC11 full-length ORF ( NP_076932.1, 1 a.a. - 271 a.a.) recombinant protein with GST-tag at N-terminal.
<b>Species</b>	Human
<b>Source</b>	Wheat Germ
<b>Description</b>	<p>This gene encodes a member of the collectin family of C-type lectins that possess collagen-like sequences and carbohydrate recognition domains. Collectins are secreted proteins that play important roles in the innate immune system by binding to carbohydrate antigens on microorganisms, facilitating their recognition and removal. The encoded protein binds to multiple sugars with a preference for fucose and mannose. Mutations in this gene are a cause of 3MC syndrome-2. Alternatively spliced transcript variants encoding multiple isoforms have been observed for this gene. [provided by RefSeq, Dec 2011]</p>
<b>Molecular Mass</b>	55.1 kDa
<b>AA Sequence</b>	<p>MRGNLALVGVLSLAFLLPSGHPQPAGDDACSVQILVPGLKGDAGEKGDKGAPG  RPGRVGPTGEKGDMDKGQKGSVGRHGKIGPIGSKGEKGDSDIGPPGPNGEPPG  LPCECSQLRKAIGEMDNQVSQLTSELKFIKNAVAGVRETESKIYLLVKEEKRYADAQL  SCQGRGGTLSMPKDEAANGLMAAYLAQAGLARVFIGINDLEKEGAFVYSDHSPMRT  FNKWRSGEPNNAYDEEDCVEMVASGGWNDVACHTTMYFMCEFDKENM</p>
<b>Applications</b>	Enzyme-linked Immunoabsorbent Assay

 Tel: 1-631-559-9269    1-516-512-3133

 Email: [info@creative-biomart.com](mailto:info@creative-biomart.com)     Fax: 1-631-938-8127

 45-1 Ramsey Road, Shirley, NY 11967, USA

Western Blot (Recombinant protein)  
 Antibody Production  
 Protein Array

<b>Notes</b>	Best use within three months from the date of receipt of this protein.
<b>Storage</b>	Store at -80 centigrade. Aliquot to avoid repeated freezing and thawing.
<b>Storage Buffer</b>	50 mM Tris-HCl, 10 mM reduced Glutathione, pH=8.0 in the elution buffer.

## GENE INFORMATION

<b>Gene Name</b>	COLEC11 collectin sub-family member 11 [ Homo sapiens ]
<b>Official Symbol</b>	COLEC11
<b>Synonyms</b>	COLEC11; collectin sub-family member 11; MGC3279;
<b>Gene ID</b>	78989
<b>mRNA Refseq</b>	NM_001255982
<b>Protein Refseq</b>	NP_001242911
<b>MIM</b>	612502
<b>UniProt ID</b>	Q9BWP8

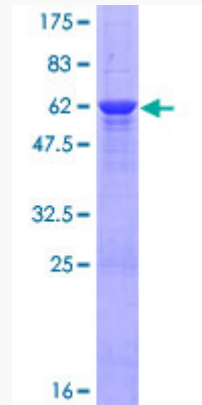
 Tel: 1-631-559-9269 1-516-512-3133

 Email: [info@creative-biomart.com](mailto:info@creative-biomart.com)  Fax: 1-631-938-8127

 45-1 Ramsey Road, Shirley, NY 11967, USA

**Quality Control**

**Testing:**



12.5% SDS-PAGE Stained with Coomassie Blue.

 Tel: 1-631-559-9269 1-516-512-3133

 Email: [info@creative-biomart.com](mailto:info@creative-biomart.com)  Fax: 1-631-938-8127

 45-1 Ramsey Road, Shirley, NY 11967, USA