

Recombinant Human COLEC11 Protein (Gln26-Met271), C-His tagged

Cat. No. COLEC11-2219H Lot. No. (See product label)

SPECIFICATION

Product Overview	Recombinant human COLEC11 (Gln26-Met271) fused with C-terminal His tag was expressed in Mammalian cells.
Species	Human
Source	Mammalian Cells
ProteinLength	Gln26-Met271
Form	Lyophilized powder/frozen liquid
Molecular Mass	27.06 kDa
Purity	>90% as determined by SDS-PAGE
Notes	For research use only.
Storage	Use a manual defrost freezer and avoid repeated freeze thaw cycles. Store at 2 to 8 centigrade for one week. Store at -20 to -80 centigrade for twelve months from the date of receipt.
Storage Buffer	Supplied as solution form in PBS or lyophilized from PBS.
Reconstitution	Reconstitute in sterile water for a stock solution.

 Tel: 1-631-559-9269 1-516-512-3133

 Email: info@creative-biomart.com  Fax: 1-631-938-8127

 45-1 Ramsey Road, Shirley, NY 11967, USA

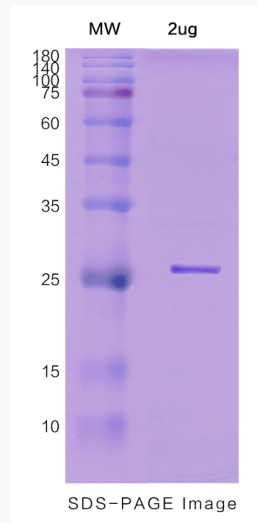
Shipping

They are shipped out with dry ice/blue ice unless customers require otherwise.

GENE INFORMATION**Gene Name** COLEC11 collectin sub-family member 11 [Homo sapiens (human)]**Official Symbol** COLEC11**Synonyms** COLEC11; collectin sub-family member 11; MGC3279;**Gene ID** 78989**mRNA Refseq** NM_199235**Protein Refseq** NP_954705**MIM** 612502**UniProt ID** Q9BWP8 Tel: 1-631-559-9269 1-516-512-3133 Email: info@creative-biomart.com  Fax: 1-631-938-8127 45-1 Ramsey Road, Shirley, NY 11967, USA



SDS-PAGE



Tel: 1-631-559-9269 1-516-512-3133

Email: info@creative-biomart.com Fax: 1-631-938-8127

45-1 Ramsey Road, Shirley, NY 11967, USA