

Recombinant Human COLEC11 Protein, Myc/DDK-tagged, C13 and N15-labeled

Cat. No. COLEC11-6223H **Lot. No.** (See product label)

SPECIFICATION

Product Overview

COLEC11 MS Standard C13 and N15-labeled recombinant protein (NP_954705) with a C-terminal MYC/DDK tag, was expressed in HEK293 cells.

Species

Human

Source

HEK293

Description

This gene encodes a member of the collectin family of C-type lectins that possess collagen-like sequences and carbohydrate recognition domains. Collectins are secreted proteins that play important roles in the innate immune system by binding to carbohydrate antigens on microorganisms, facilitating their recognition and removal. The encoded protein binds to multiple sugars with a preference for fucose and mannose. Mutations in this gene are a cause of 3MC syndrome-2. Alternatively spliced transcript variants encoding multiple isoforms have been observed for this gene.

Molecular Mass

29 kDa

AA Sequence

MTPALCRSSSLASKGMRERRETKAPPDGLEESAPREKKQSQPVV TASDISKRKCTS
SFVEMGSQQGDMGDKGQKGSVGRHGKIGPIGSKGEKGDSDIGPPGPNGEPGLPC
ECSQLRKAIGEMDNQVSQLTSELKFIKNAVAGVRETESKIYLLVKEEKRYADAQLSC
QGRGGTLSMPKDEAANGLMAAYLAQAGLARVFIGINDLEKEGAFVYSDHSPMRTFN
KWRSGEPNNAYDEEDCVEMVASGGWNDVACHTTMYFMCEFDKENMTRTRPLEQ

 Tel: 1-631-559-9269 1-516-512-3133

 Email: info@creative-biomart.com  Fax: 1-631-938-8127

 45-1 Ramsey Road, Shirley, NY 11967, USA

KLISEEDLAANDILDYKDDDDKV

Purity > 80% as determined by SDS-PAGE and Coomassie blue staining

Stability Stable for 3 months from receipt of products under proper storage and handling conditions.

Storage Store at -80 centigrade. Avoid repeated freeze-thaw cycles.

Concentration 50 µg/mL as determined by BCA

Storage Buffer 100 mM glycine, 25 mM Tris-HCl, pH 7.3.

GENE INFORMATION

Gene Name [COLEC11 collectin sub-family member 11 \[Homo sapiens \(human\) \]](#)

Official Symbol [COLEC11](#)

Synonyms COLEC11; collectin sub-family member 11; MGC3279;

Gene ID [78989](#)

mRNA Refseq [NM_199235](#)

Protein Refseq [NP_954705](#)

MIM [612502](#)

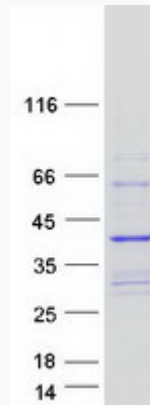
UniProt ID [Q9BWP8](#)

 Tel: 1-631-559-9269 1-516-512-3133

 Email: info@creative-biomart.com  Fax: 1-631-938-8127

 45-1 Ramsey Road, Shirley, NY 11967, USA

SDS-PAGE



 Tel: 1-631-559-9269 1-516-512-3133

 Email: info@creative-biomart.com  Fax: 1-631-938-8127

 45-1 Ramsey Road, Shirley, NY 11967, USA