

## Recombinant Human COLEC12 Protein, GST-tagged

**Cat. No.** COLEC12-1669H    **Lot. No.** (See product label)

### SPECIFICATION

|                         |   |
|-------------------------|---|
| <b>Product Overview</b> | Human COLEC12 full-length ORF ( NP_110408.2, 1 a.a. - 622 a.a.) recombinant protein with GST-tag at N-terminal.   |
| <b>Species</b>          | Human   |
| <b>Source</b>           | Wheat Germ  |
| <b>Description</b>      | This gene encodes a member of the C-lectin family, proteins that possess collagen-like sequences and carbohydrate recognition domains. This protein is a scavenger receptor, a cell surface glycoprotein that displays several functions associated with host defense. It can bind to carbohydrate antigens on microorganisms, facilitating their recognition and removal. It also mediates the recognition, internalization, and degradation of oxidatively modified low density lipoprotein by vascular endothelial cells. [provided by RefSeq, Oct 2011] |
| <b>Molecular Mass</b>   | 93.5 kDa  |
| <b>AA Sequence</b>      | MKDDFAEEEEVQSFQYKRFGIQEGTQCTKCKNNWALKFSIILLYILCALLTITVAILGY<br>KVVEKMDNVTGGMETSQRQTYDDKLTAVESDLKKLGDQTGKKAISTNSELSTFRSDIL<br>DLRQQLREITEKTSKNKDTLEKLQASGDALVDRQSQLKETLENNFLITTVNKTLQAY<br>NGYVTNLQQDTSVLQGNLQNMYSHNVVIMNLLNLTQVQQRNLITNLQRSVDDT<br>SQAIQRIKNDQNLQQVFLQAKKDTDWLKEKVQSLQTLAANNSALAKANNDTLEDM<br>NSQLNSFTGQMENITTISQANEQNLKDLQDLHKDAENRTAIKFNQLEERFQLFETDIV<br>NIISNISYTAHHLRTLTSNLNEVRTTCTDTLTKHTDDLTLNNTLANIRLDSVSLRMQQ  |

 Tel: 1-631-559-9269    1-516-512-3133

 Email: [info@creative-biomart.com](mailto:info@creative-biomart.com)     Fax: 1-631-938-8127

 45-1 Ramsey Road, Shirley, NY 11967, USA

DLMRSRLDTEVANLSVIMEEMKLVDSKHGQLIKNFTILQGPPGPRGPRGDRGSQGP  
 PGPTGNKGQKGEKGEPPGPAGERGPIGPAGPPGERGGKGSKGSQGPKGSRG  
 SPGKPGPQQPSGDPGPPGPPGKEGLPGPQQPPGFQGLQGTVGEPGVPGPRGLP  
 GLPGVPGMPGPKGPPGPPGSGAVVPLALQNEPTPAPEDNSKSKPSLQPGGQGS  
 ACA

**Applications**  
 Enzyme-linked Immunoabsorbent Assay  
 Western Blot (Recombinant protein)  
 Antibody Production  
 Protein Array

**Notes** Best use within three months from the date of receipt of this protein.

**Storage** Store at -80 centigrade. Aliquot to avoid repeated freezing and thawing.

**Storage Buffer** 50 mM Tris-HCl, 10 mM reduced Glutathione, pH=8.0 in the elution buffer.

## GENE INFORMATION

**Gene Name** [COLEC12 collectin sub-family member 12 \[ Homo sapiens \]](#)

**Official Symbol** [COLEC12](#)

**Synonyms** COLEC12; collectin sub-family member 12; collectin-12; CL P1; SCARA4; SRCL; hCL-P1; collectin placenta protein 1; nurse cell scavenger receptor 2; scavenger receptor class A, member 4; scavenger receptor with C-type lectin; CLP1; NSR2;

**Gene ID** [81035](#)

**mRNA Refseq** [NM\\_130386](#)

 Tel: 1-631-559-9269 1-516-512-3133

 Email: [info@creative-biomart.com](mailto:info@creative-biomart.com)  Fax: 1-631-938-8127

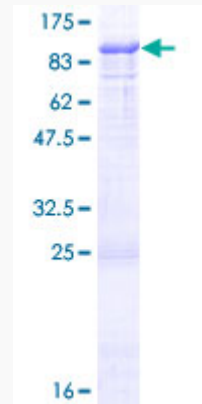
 45-1 Ramsey Road, Shirley, NY 11967, USA

**Protein Refseq** NP\_569057

**MIM** 607621

**UniProt ID** Q5KU26

**Quality Control  
Testing:**



12.5% SDS-PAGE Stained with Coomassie Blue.

 Tel: 1-631-559-9269 1-516-512-3133

 Email: [info@creative-biomart.com](mailto:info@creative-biomart.com)  Fax: 1-631-938-8127

 45-1 Ramsey Road, Shirley, NY 11967, USA