

Recombinant Human COLEC12 Protein, Myc/DDK-tagged, C13 and N15-labeled

Cat. No. COLEC12-6298H **Lot. No.** (See product label)

SPECIFICATION

Product Overview

COLEC12 MS Standard C13 and N15-labeled recombinant protein (NP_569057) with a C-terminal MYC/DDK tag, was expressed in HEK293 cells.

Species

Human

Source

HEK293

Description

This gene encodes a member of the C-lectin family, proteins that possess collagen-like sequences and carbohydrate recognition domains. This protein is a scavenger receptor that displays several functions associated with host defense. It can bind to carbohydrate antigens on microorganisms, facilitating their recognition and removal. It also mediates the recognition, internalization, and degradation of oxidatively modified low density lipoprotein by vascular endothelial cells.

Molecular Mass

81.6 kDa

AA Sequence

MKDDFAEEEEVQSFQYKRFGIQEGTQCTKCKNNWALKFSIILLYILCALLTITVAILGY
 KVVEKMDNVTGGMETSQRQTYDDKLTAVESDLEKLGQDTGKKAISTNSELSTFRSDIL
 DLRQQLREITEKTSKNKDTLEKLQASGDALVDRQSQLKETLENNFLITTVNKTLLQAY
 NGYVTNLQQDTSVLQGNLQNMYSHNVMNLLNLTQVQQRNLITNLQRSVDDT
 SQAIQRIKNDFFQNLQQVFLQAKKDTDWLKEKVQSLQTLAANNSALAKANNDTLEDM
 NSQLNSFTGQMENITTISQANEQNLKDLQDLHKDAENRTAIKFNQLEERFQLFETDIV
 NIISNISYTAHHLRTLTSNLNEVRTTCTDITLKHTDDLTLNNTLANIRLDSVSLRMQQ

 Tel: 1-631-559-9269 1-516-512-3133

 Email: info@creative-biomart.com  Fax: 1-631-938-8127

 45-1 Ramsey Road, Shirley, NY 11967, USA

DLMRSRLDTEVANLSVIMEEMKLVDSKHGQLIKNFTILQGPPGPRGPRGDRGSQGP
 PGPTGNKGQKGEKGEPPGPAGERGPIGPAGPPGERGGKGSKGSQGPKGSRG
 SPGKPGPQQPSGDPGPPGPPGKEGLPGPQQPPGFQGLQGTVGEPPGVPGRGLP
 GLPGVPGMPGPKGPPGPPGSGAVVPLALQNEPTPAPEDNSCPHWNFTDKCY
 YFSVEKEIFEDAKLFCEDKSSHLVFINTREEQQWIKKQMVGRESHWIGLTDSENERE
 WKWLDGTSPDYKNWKAGQPDNWDGHHGHPGEDCAGLIYAGQWNDFQCEDVNNFI
 CEKDRETVLSSALTRTRPLEQKLISEEDLAANDILDYKDDDDKV

Purity > 80% as determined by SDS-PAGE and Coomassie blue staining

Stability Stable for 3 months from receipt of products under proper storage and handling conditions.

Storage Store at -80 centigrade. Avoid repeated freeze-thaw cycles.

Concentration 50 µg/mL as determined by BCA

Storage Buffer 100 mM glycine, 25 mM Tris-HCl, pH 7.3.

GENE INFORMATION

Gene Name COLEC12 collectin sub-family member 12 [*Homo sapiens (human)*]

Official Symbol COLEC12

Synonyms COLEC12; collectin sub-family member 12; collectin-12; CL P1; SCARA4; SRCL; hCL-P1; collectin placenta protein 1; nurse cell scavenger receptor 2; scavenger receptor class A, member 4; scavenger receptor with C-type lectin; CLP1; NSR2;

Gene ID 81035

 Tel: 1-631-559-9269 1-516-512-3133

 Email: info@creative-biomart.com  Fax: 1-631-938-8127

 45-1 Ramsey Road, Shirley, NY 11967, USA

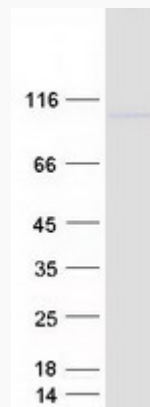
mRNA Refseq [NM_130386](#)

Protein Refseq [NP_569057](#)

MIM [607621](#)

UniProt ID [Q5KU26](#)

SDS-PAGE



 Tel: 1-631-559-9269 1-516-512-3133

 Email: info@creative-biomart.com  Fax: 1-631-938-8127

 45-1 Ramsey Road, Shirley, NY 11967, USA