

Recombinant Human COMMD1 Protein, GST-tagged

Cat. No. COMMD1-1674H Lot. No. (See product label)

SPECIFICATION

Product Overview	Human COMMD1 full-length ORF (AAH22046.1, 1 a.a. - 190 a.a.) recombinant protein with GST-tag at N-terminal.
Species	Human
Source	Wheat Germ
Description	COMMD1 is a regulator of copper homeostasis, sodium uptake, and NF-kappa-B (see MIM 164011) signaling (de Bie et al., 2005 [PubMed 16267171]).[supplied by OMIM, Sep 2009]
Molecular Mass	46.64 kDa
AA Sequence	MAAGELEGGKPLSGLLNALAQDTFHGYPGITEELLRSQLYPEVPPEEFRPFLAKMRG ILKSIASADMDFNQLEAFLTAQTKKQGGITSDQAAVISKFWKSHKTKIRESLMNQSRW NSGLRGLSWRVDGKSQSRHSAQIHTPVAIIELELGKYGQESEFLCLEFDEVKVNQILK TLSEVEESISTLISQPN
Applications	Enzyme-linked Immunoabsorbent Assay Western Blot (Recombinant protein) Antibody Production Protein Array
Notes	Best use within three months from the date of receipt of this protein.

 Tel: 1-631-559-9269 1-516-512-3133

 Email: info@creative-biomart.com  Fax: 1-631-938-8127

 45-1 Ramsey Road, Shirley, NY 11967, USA

Storage Store at -80 centigrade. Aliquot to avoid repeated freezing and thawing.

Storage Buffer 50 mM Tris-HCl, 10 mM reduced Glutathione, pH=8.0 in the elution buffer.

GENE INFORMATION

Gene Name [COMMD1 copper metabolism \(Murr1\) domain containing 1 \[Homo sapiens \]](#)

Official Symbol [COMMD1](#)

Synonyms COMMD1; copper metabolism (Murr1) domain containing 1; C2orf5, chromosome 2 open reading frame 5 (MURR1); COMM domain-containing protein 1; copper metabolism gene MURR1; MGC27155; MURR1; protein Murr1; C2orf5;

Gene ID [150684](#)

mRNA Refseq [NM_152516](#)

Protein Refseq [NP_689729](#)

MIM [607238](#)

UniProt ID [Q8N668](#)

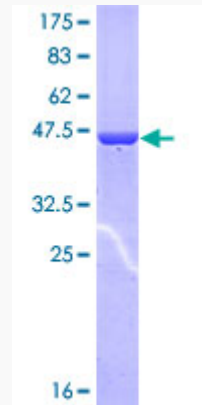
 Tel: 1-631-559-9269 1-516-512-3133

 Email: info@creative-biomart.com  Fax: 1-631-938-8127

 45-1 Ramsey Road, Shirley, NY 11967, USA

Quality Control

Testing:



12.5% SDS-PAGE Stained with Coomassie Blue.

 Tel: 1-631-559-9269 1-516-512-3133

 Email: info@creative-biomart.com  Fax: 1-631-938-8127

 45-1 Ramsey Road, Shirley, NY 11967, USA