

# Recombinant Human COMMD1 Protein, Myc/DDK-tagged, C13 and N15-labeled

**Cat. No.** COMMD1-954H    **Lot. No.** (See product label)

## SPECIFICATION

<b>Product Overview</b>	COMMD1 MS Standard C13 and N15-labeled recombinant protein (NP_689729) with a C-terminal MYC/DDK tag, was expressed in HEK293 cells.
<b>Species</b>	Human
<b>Source</b>	HEK293
<b>Description</b>	COMMD1 is a regulator of copper homeostasis, sodium uptake, and NF-kappa-B signaling.
<b>Molecular Mass</b>	21.2 kDa
<b>AA Sequence</b>	MAAGELEGGKPLSGLLNALAQDTFHGYPGITEELLRSQLYPEVPPEEFRPFLAKMRG ILKSASADMDFNQLEAFLTAQTKKQGGITSDQAAVISKFWKSHKTKIRESLMNQSRW NSGLRGLSWRVDGKSQSRHSAQIHTPVAIIELELGKYGQESEFLCLEFDEVKVNQILK TLSEVEESISTLISQPNTRTRPLEQKLISEEDLAANDILDYKDDDDKV
<b>Purity</b>	> 80% as determined by SDS-PAGE and Coomassie blue staining
<b>Stability</b>	Stable for 3 months from receipt of products under proper storage and handling conditions.
<b>Storage</b>	Store at -80 centigrade. Avoid repeated freeze-thaw cycles.

 Tel: 1-631-559-9269    1-516-512-3133

 Email: [info@creative-biomart.com](mailto:info@creative-biomart.com)     Fax: 1-631-938-8127

 45-1 Ramsey Road, Shirley, NY 11967, USA

**Concentration** 50 µg/mL as determined by BCA

**Storage Buffer** 100 mM glycine, 25 mM Tris-HCl, pH 7.3.

## GENE INFORMATION

**Gene Name** [COMMD1 copper metabolism domain containing 1 \[ Homo sapiens \(human\) \]](#)

**Official Symbol** [COMMD1](#)

**Synonyms** COMMD1; copper metabolism (Murr1) domain containing 1; C2orf5, chromosome 2 open reading frame 5 (MURR1); COMM domain-containing protein 1; copper metabolism gene MURR1; MGC27155; MURR1; protein Murr1; C2orf5;

**Gene ID** [150684](#)

**mRNA Refseq** [NM\\_152516](#)

**Protein Refseq** [NP\\_689729](#)

**MIM** [607238](#)

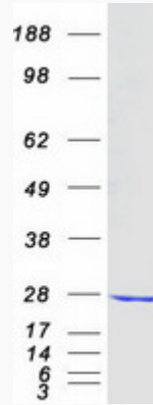
**UniProt ID** [Q8N668](#)

 Tel: 1-631-559-9269 1-516-512-3133

 Email: [info@creative-biomart.com](mailto:info@creative-biomart.com)  Fax: 1-631-938-8127

 45-1 Ramsey Road, Shirley, NY 11967, USA

SDS-PAGE



 Tel: 1-631-559-9269 1-516-512-3133

 Email: [info@creative-biomart.com](mailto:info@creative-biomart.com)  Fax: 1-631-938-8127

 45-1 Ramsey Road, Shirley, NY 11967, USA