

Recombinant Human COMMD3 Protein, GST-tagged

Cat. No. COMMD3-1678H Lot. No. (See product label)

SPECIFICATION

Product Overview	Human COMMD3 full-length ORF (AAH22898, 1 a.a. - 195 a.a.) recombinant protein with GST-tag at N-terminal.
Species	Human
Source	Wheat Germ
Description	COMMD3 (COMM Domain Containing 3) is a Protein Coding gene. Diseases associated with COMMD3 include Tarsal Tunnel Syndrome and Tibial Neuropathy. Among its related pathways are Innate Immune System.
Molecular Mass	46.97 kDa
AA Sequence	MELSESVQKGFQMLADPRSFDSNAFTLLLRAAFQSLLDQAQADEAVLDHPDLKHIDPV VLKHCHAAAATYILEAGKHRADKSTLSTYLEDCKFDRERIELFCTEYQNNKNSLEILL GSIGRSLPHITDVSWRLEYQIKTNQLHRMYRPAYLVTLQNTDSPSYPEISFSCSM EQLQDLVGKCLKDASKSLERATQS
Applications	Enzyme-linked Immunoabsorbent Assay Western Blot (Recombinant protein) Antibody Production Protein Array
Notes	Best use within three months from the date of receipt of this protein.

 Tel: 1-631-559-9269 1-516-512-3133

 Email: info@creative-biomart.com  Fax: 1-631-938-8127

 45-1 Ramsey Road, Shirley, NY 11967, USA

Storage Store at -80 centigrade. Aliquot to avoid repeated freezing and thawing.

Storage Buffer 50 mM Tris-HCl, 10 mM reduced Glutathione, pH=8.0 in the elution buffer.

GENE INFORMATION

Gene Name [COMMD3](#) COMM domain containing 3 [Homo sapiens]

Official Symbol [COMMD3](#)

Synonyms COMMD3; COMM domain containing 3; C10orf8, chromosome 10 open reading frame 8; COMM domain-containing protein 3; BUP; protein Bup; C10orf8; FLJ45471; DKFZp686K0399;

Gene ID [23412](#)

mRNA Refseq [NM_012071](#)

Protein Refseq [NP_036203](#)

MIM [616700](#)

UniProt ID [Q9UB11](#)

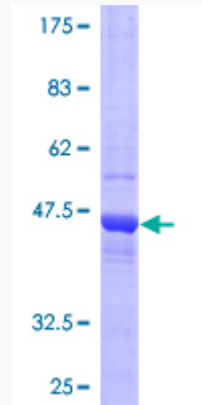
 Tel: 1-631-559-9269 1-516-512-3133

 Email: info@creative-biomart.com  Fax: 1-631-938-8127

 45-1 Ramsey Road, Shirley, NY 11967, USA

Quality Control

Testing:



12.5% SDS-PAGE Stained with Coomassie Blue.

 Tel: 1-631-559-9269 1-516-512-3133

 Email: info@creative-biomart.com  Fax: 1-631-938-8127

 45-1 Ramsey Road, Shirley, NY 11967, USA