

Recombinant Human COMMD5 Protein, GST-tagged

Cat. No. COMMD5-1682H Lot. No. (See product label)

SPECIFICATION

Product Overview	Human COMMD5 partial ORF (NP_054785, 125 a.a. - 224 a.a.) recombinant protein with GST-tag at N-terminal.
Species	Human
Source	Wheat Germ
Description	COMMD5 (COMM Domain Containing 5) is a Protein Coding gene.
Molecular Mass	36.74 kDa
AA Sequence	DLASVVFSGSRPLLDSVAQQQGAWLPHVADFRWRVDVAISTSALARSLQPSVLMQL KLSDGSAYRFEVPTAKFQELRYSVALVLKEMADLEKRCERRLQD
Applications	Enzyme-linked Immunoabsorbent Assay Western Blot (Recombinant protein) Antibody Production Protein Array
Notes	Best use within three months from the date of receipt of this protein.
Storage	Store at -80 centigrade. Aliquot to avoid repeated freezing and thawing.
Storage Buffer	50 mM Tris-HCl, 10 mM reduced Glutathione, pH=8.0 in the elution buffer.

 Tel: 1-631-559-9269 1-516-512-3133

 Email: info@creative-biomart.com  Fax: 1-631-938-8127

 45-1 Ramsey Road, Shirley, NY 11967, USA

GENE INFORMATION

Gene Name COMMD5 COMM domain containing 5 [Homo sapiens]

Official Symbol COMMD5

Synonyms COMM domain containing 5; FLJ13008; HCaRG; HT002Hypertension-related calcium-regulated gene protein; COMM domain-containing protein 5HCARG; COMMD5

Gene ID 28991

mRNA Refseq NM_014066.3

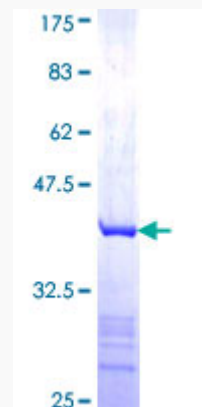
Protein Refseq NP_054785.2

MIM 608216

UniProt ID Q9GZQ3

Quality Control

Testing:



12.5% SDS-PAGE Stained with Coomassie Blue.

 Tel: 1-631-559-9269 1-516-512-3133

 Email: info@creative-biomart.com  Fax: 1-631-938-8127

 45-1 Ramsey Road, Shirley, NY 11967, USA