

Recombinant Human COMMD7 Protein, GST-tagged

Cat. No. COMMD7-1684H Lot. No. (See product label)

SPECIFICATION

Product Overview	Human COMMD7 full-length ORF (AAH47440, 1 a.a. - 200 a.a.) recombinant protein with GST-tag at N-terminal.
Species	Human
Source	Wheat Germ
Description	COMMD7 (COMM Domain Containing 7) is a Protein Coding gene. GO annotations related to this gene include NF-kappaB binding.
Molecular Mass	47.74 kDa
AA Sequence	MGRLHCTEDPVPEAVGGDMQQLNQLGAQQFSALTEVLFHFLTEQKEVERFLAQLS EFATTNQISLGLSLRSIVKSLLLVPNGALKKSLTAKQVQADFITLGLSEEKATYFSEKWK QNTPTLARWAIGQTLMINQLIDMEWKFGVTSGSSELEKVGSI FLQLKLVVKKGNQTK NVYIELTLPQFYSFLHEMERVRTSMECFC
Applications	Enzyme-linked Immunoabsorbent Assay Western Blot (Recombinant protein) Antibody Production Protein Array
Notes	Best use within three months from the date of receipt of this protein.
Storage	Store at -80 centigrade. Aliquot to avoid repeated freezing and thawing.

 Tel: 1-631-559-9269 1-516-512-3133

 Email: info@creative-biomart.com  Fax: 1-631-938-8127

 45-1 Ramsey Road, Shirley, NY 11967, USA

Storage Buffer 50 mM Tris-HCl, 10 mM reduced Glutathione, pH=8.0 in the elution buffer.

GENE INFORMATION

Gene Name [COMMD7](#) COMM domain containing 7 [Homo sapiens]

Official Symbol [COMMD7](#)

Synonyms COMMD7; COMM domain containing 7; C20orf92, chromosome 20 open reading frame 92; COMM domain-containing protein 7; dJ1085F17.3; C20orf92; FLJ14987; MGC33315;

Gene ID [149951](#)

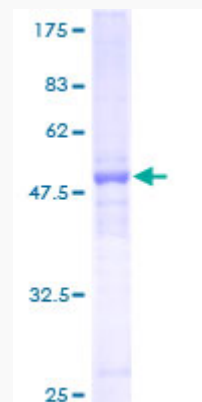
mRNA Refseq [NM_001099339](#)

Protein Refseq [NP_001092809](#)

MIM [616703](#)

UniProt ID [Q86VX2](#)

Quality Control Testing:



 Tel: 1-631-559-9269 1-516-512-3133

 Email: info@creative-biomart.com  Fax: 1-631-938-8127

 45-1 Ramsey Road, Shirley, NY 11967, USA



12.5% SDS-PAGE Stained with Coomassie Blue.

 Tel: 1-631-559-9269 1-516-512-3133

 Email: info@creative-biomart.com  Fax: 1-631-938-8127

 45-1 Ramsey Road, Shirley, NY 11967, USA