

Recombinant Human COMMD7 Protein, Myc/DDK-tagged, C13 and N15-labeled

Cat. No. COMMD7-6324H Lot. No. (See product label)

SPECIFICATION

Product Overview	COMMD7 MS Standard C13 and N15-labeled recombinant protein (NP_444269) with a C-terminal MYC/DDK tag, was expressed in HEK293 cells.
Species	Human
Source	HEK293
Description	COMMD7 (COMM Domain Containing 7) is a Protein Coding gene. Gene Ontology (GO) annotations related to this gene include NF-kappaB binding. An important paralog of this gene is ENSG00000285382.
Molecular Mass	22.6 kDa
AA Sequence	MGRLHCTEDPVPEAVGGDMQQLNQLGAQQFSALTEVLFHFLTEQKEVERFLAQLS EFATTNQISLGLSRSIVKSLLLVPNGALKKSLTAKQVQADFITLGLSEEKATYFSEKWK QNTPTLARWAIGQTLMINQLIDMEWKFGVTSGSSELEKVGSIPLQLKLVVKKGNQTK NVYIELTLPQFYSFLHEMERVRTSMFCFCTRTRPLEQKLISEEDLAANDILDYKDDDD KV
Purity	> 80% as determined by SDS-PAGE and Coomassie blue staining
Stability	Stable for 3 months from receipt of products under proper storage and handling conditions.

 Tel: 1-631-559-9269 1-516-512-3133

 Email: info@creative-biomart.com  Fax: 1-631-938-8127

 45-1 Ramsey Road, Shirley, NY 11967, USA

Storage	Store at -80 centigrade. Avoid repeated freeze-thaw cycles.
Concentration	50 µg/mL as determined by BCA
Storage Buffer	100 mM glycine, 25 mM Tris-HCl, pH 7.3.
GENE INFORMATION	
Gene Name	COMMD7 COMM domain containing 7 [Homo sapiens (human)]
Official Symbol	COMMD7
Synonyms	COMMD7; COMM domain containing 7; C20orf92, chromosome 20 open reading frame 92; COMM domain-containing protein 7; dJ1085F17.3; C20orf92; FLJ14987; MGC33315;
Gene ID	149951
mRNA Refseq	NM_053041
Protein Refseq	NP_444269
MIM	616703
UniProt ID	Q86VX2

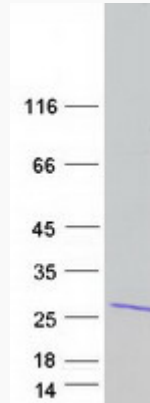
 Tel: 1-631-559-9269 1-516-512-3133

 Email: info@creative-biomart.com  Fax: 1-631-938-8127

 45-1 Ramsey Road, Shirley, NY 11967, USA



SDS-PAGE



Tel: 1-631-559-9269 1-516-512-3133

Email: info@creative-biomart.com Fax: 1-631-938-8127

45-1 Ramsey Road, Shirley, NY 11967, USA