

Recombinant Human COMMD8 Protein, GST-tagged

Cat. No. COMMD8-1685H Lot. No. (See product label)

SPECIFICATION

Product Overview	Human COMMD8 full-length ORF (NP_060315.1, 1 a.a. - 183 a.a.) recombinant protein with GST-tag at N-terminal.
Species	Human
Source	Wheat Germ
Description	The protein encoded by this gene binds coiled-coil domain-containing protein 22 (CCDC22), and this complex can regulate the turnover of I-kappa-B and the activation of NF-kappa-B. [provided by RefSeq, Jul 2016]
Molecular Mass	47.5 kDa
AA Sequence	MEPEEGTPLWRLQKLPAELGPQLLHKIIDGICGRAYPVYQDYHTVWESEEWMHVLE DIAKFFKAIVGKNLPDEEIFQQLNQLNSLHQETIMKCVKSRKDEIKQALSREIVAISQAQ LQDFDWQVKLALSSDKIAALRMPLLSLHLDVKENGEVKPYSIEMSREELQNLIQSLEA ANKVVLQLK
Applications	Enzyme-linked Immunoabsorbent Assay Western Blot (Recombinant protein) Antibody Production Protein Array
Notes	Best use within three months from the date of receipt of this protein.

 Tel: 1-631-559-9269 1-516-512-3133

 Email: info@creative-biomart.com  Fax: 1-631-938-8127

 45-1 Ramsey Road, Shirley, NY 11967, USA

Storage Store at -80 centigrade. Aliquot to avoid repeated freezing and thawing.

Storage Buffer 50 mM Tris-HCl, 10 mM reduced Glutathione, pH=8.0 in the elution buffer.

GENE INFORMATION

Gene Name COMMD8 COMM domain containing 8 [Homo sapiens]

Official Symbol COMMD8

Synonyms COMMD8; COMM domain containing 8; COMM domain-containing protein 8; FLJ20502;

Gene ID 54951

mRNA Refseq NM_017845

Protein Refseq NP_060315

MIM 616656

UniProt ID Q9NX08

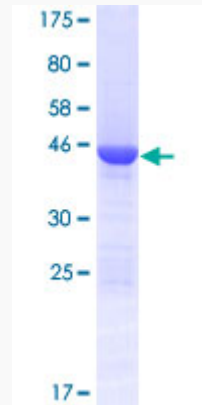
 Tel: 1-631-559-9269 1-516-512-3133

 Email: info@creative-biomart.com  Fax: 1-631-938-8127

 45-1 Ramsey Road, Shirley, NY 11967, USA

Quality Control

Testing:



12.5% SDS-PAGE Stained with Coomassie Blue.

 Tel: 1-631-559-9269 1-516-512-3133

 Email: info@creative-biomart.com  Fax: 1-631-938-8127

 45-1 Ramsey Road, Shirley, NY 11967, USA