

Recombinant Human COMMD9 Protein, GST-tagged

Cat. No. COMMD9-1686H Lot. No. (See product label)

SPECIFICATION

Product Overview	Human COMMD9 full-length ORF (AAH10892.1, 1 a.a. - 198 a.a.) recombinant protein with GST-tag at N-terminal.
Species	Human
Source	Wheat Germ
Description	COMMD9 (COMM Domain Containing 9) is a Protein Coding gene. Among its related pathways are Innate Immune System.
Molecular Mass	48.2 kDa
AA Sequence	MAALTAEHFAALQSLLKASSKDVVRQLCQESFSSSALGLKLLDVTCSLSVTQEEA EELLQALHRLTRLVAFRDLSSAEAILALFPENFHQNLKLLTKIILEHVSTWRTEAQAN QISLPRLVDLDWRVDIKTSSDSISRMAVPTCLLQMKIQEDPSLCGDKPSISAVTVELS KETLDTMLDGLGRIRDQLSAVASK
Applications	Enzyme-linked Immunoabsorbent Assay Western Blot (Recombinant protein) Antibody Production Protein Array
Notes	Best use within three months from the date of receipt of this protein.
Storage	Store at -80 centigrade. Aliquot to avoid repeated freezing and thawing.

 Tel: 1-631-559-9269 1-516-512-3133

 Email: info@creative-biomart.com  Fax: 1-631-938-8127

 45-1 Ramsey Road, Shirley, NY 11967, USA

Storage Buffer 50 mM Tris-HCl, 10 mM reduced Glutathione, pH=8.0 in the elution buffer.

GENE INFORMATION

Gene Name COMMD9 COMM domain containing 9 [Homo sapiens]

Official Symbol COMMD9

Synonyms HSPC166

Gene ID 29099

mRNA Refseq NM_014186.3

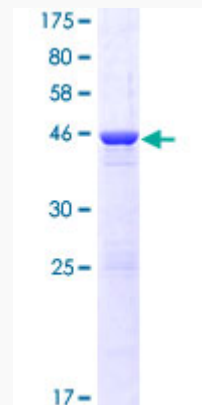
Protein Refseq NP_054905.2

MIM 612299


UniProt ID Q9P000

Quality Control

Testing:



12.5% SDS-PAGE Stained with Coomassie Blue.

 Tel: 1-631-559-9269 1-516-512-3133

 Email: info@creative-biomart.com  Fax: 1-631-938-8127

 45-1 Ramsey Road, Shirley, NY 11967, USA