

Recombinant Human COMP Protein, His-tagged

Cat. No. COMP-01H Lot. No. (See product label)

SPECIFICATION

Product Overview	Recombinant human COMP (21-757aa), fused to His-tag at C-terminus, was expressed in HEK293 cell and purified by using conventional chromatography techniques.
Species	Human
Source	HEK293
ProteinLength	21-757 a.a.
Description	The protein encoded by this gene is a noncollagenous extracellular matrix (ECM) protein. It consists of five identical glycoprotein subunits, each with EGF-like and calcium-binding (thrombospondin-like) domains. Oligomerization results from formation of a five-stranded coiled coil and disulfides. Binding to other ECM proteins such as collagen appears to depend on divalent cations. Contraction or expansion of a 5 aa aspartate repeat and other mutations can cause pseudoachondroplasia (PSACH) and multiple epiphyseal dysplasia (MED).
Form	Liquid
Molecular Mass	82.4 kDa (749aa)
AA Sequence	<p> QGQSPLGSDLGPQMLRELQETNAALQDVRELLRQQVREITFLKNTVMECDACGMQ QSVRTGLPSVRPLLHCAPGFCFPGVACIQTESGARCGPCPAGFTGNGSHCTDVNE CNAHPCFPRVRCINTSPGFRCEACPPGYSGPTHQGVGLAFKANKQVCTDINECET </p>

 Tel: 1-631-559-9269 1-516-512-3133

 Email: info@creative-biomart.com  Fax: 1-631-938-8127

 45-1 Ramsey Road, Shirley, NY 11967, USA



GQHNCVPNSVCINTRGSFQCGPCQPGFVGDQASGCQRRARFCPDGSPSECHEH
 ADCVLERDGSRSVCVAVGWAGNGILCGRDLDLGGFPDEKLRCRPERQCRKDNCVTV
 PNSGQEDVDRDGIGDACPDADGDGVPNEKDNCPLVRNPDQRNTDEDKWGDACD
 NCRSQKNDDQKDTDQDGRGDACDDDDIDGDRIRNQADNCPVNSDQKSDSDGDI
 GDACDNCPQKSNPDQADVDFVGDACDSDQDQDGDGHQDSRDNCPTVPNSAQ
 EDSHDHGQGDACDDDDNDGVPDSRDNCRLVPNPGQEDADRDRGVGDVCQDDFD
 ADKVVDKIDVCPENAEVTLTDFRAFQTVVLDPEGDAQIDPNWVVLNQGREIVQTMN
 SDPGLAVGYTAFNGVDFEGTFHVNTVTDDDYAGFIFGYQDSSSFYVVMWKQMEQT
 YWQANPFRAVAEPIQLKAVKSSTGPGEQLRNALWHTGDTESQVRLWLDPRNVG
 WKDKKSYRWFLQHRPQVGIRVRFYEGPELVADSNVVLDTTMRGGRLGVFCFSQE
 NIIWANLRYRCNDTIPEDYETHQLRQA

Endotoxin	< 1 EU/µg of protein (determined by LAL method)
Purity	> 85% by SDS-PAGE
Applications	SDS-PAGE
Storage	Can be stored at +2 to +8 centigrade for 1 week. For long term storage, aliquot and store at -20 to -80 centigrade. Avoid repeated freezing and thawing cycles.
Concentration	0.5 mg/mL (determined by Absorbance at 280nm)
Storage Buffer	In Phosphate-Buffered Saline (pH 7.4) containing 10% glycerol

GENE INFORMATION

Gene Name	COMP cartilage oligomeric matrix protein [Homo sapiens (human)]
Official Symbol	COMP

Synonyms COMP; cartilage oligomeric matrix protein; MED; CTS2; EDM1; EPD1; TSP5; PSACH; THBS5; cartilage oligomeric matrix protein; cartilage oligomeric matrix protein (pseudoachondroplasia, epiphyseal dysplasia 1, multiple); pseudoachondroplasia (epiphyseal dysplasia 1, multiple); thrombospondin-5

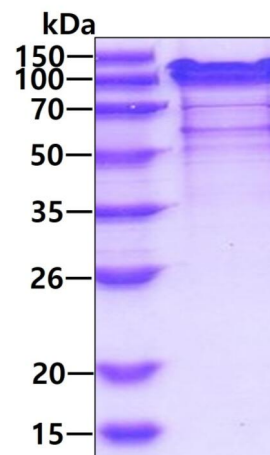
Gene ID 1311

mRNA Refseq NM_000095

Protein Refseq NP_000086

MIM 600310

UniProt ID P49747

SDS-PAGE

3 µg by SDS-PAGE under reducing condition and visualized by coomassie blue stain

 Tel: 1-631-559-9269 1-516-512-3133

 Email: info@creative-biomart.com  Fax: 1-631-938-8127

 45-1 Ramsey Road, Shirley, NY 11967, USA