

Recombinant Human COMP Protein (Ser123-His240), N-His tagged

Cat. No. COMP-1777H Lot. No. (See product label)

SPECIFICATION

Product Overview	Recombinant human COMP (Ser123-His240) fused with N-His tag was expressed in E. coli.
Species	Human
Source	E.coli
ProteinLength	Ser123-His240
Form	Lyophilized powder/frozen liquid
Molecular Mass	14.97 kDa
Purity	>90% as determined by SDS-PAGE
Notes	For research use only.
Storage	Use a manual defrost freezer and avoid repeated freeze thaw cycles. Store at 2 to 8 centigrade for one week. Store at -20 to -80 centigrade for twelve months from the date of receipt.
Storage Buffer	0.01M PBS, pH 7.4, 0.02% NLS
Reconstitution	Reconstitute in sterile water for a stock solution.

 Tel: 1-631-559-9269 1-516-512-3133

 Email: info@creative-biomart.com  Fax: 1-631-938-8127

 45-1 Ramsey Road, Shirley, NY 11967, USA

Shipping They are shipped out with dry ice/blue ice unless customers require otherwise.

GENE INFORMATION

Gene Name [COMP cartilage oligomeric matrix protein \[Homo sapiens \(human\) \]](#)

Official Symbol [COMP](#)

Synonyms COMP; cartilage oligomeric matrix protein; cartilage oligomeric matrix protein (pseudoachondroplasia, epiphyseal dysplasia 1, multiple), EDM1, EPD1, PSACH; MED; THBS5; thrombospondin 5; TSP5; thrombospondin-5; pseudoachondroplasia (epiphyseal dysplasia 1, multiple); cartilage oligomeric matrix protein (pseudoachondroplasia, epiphyseal dysplasia 1, multiple); cartilage oligomeric matrix protein (pseudoachondroplasia, epiphyseal dysplasia 1, multiple); EDM1; EPD1; PSACH; MGC131819; MGC149768;

Gene ID [1311](#)

mRNA Refseq [NM_000095](#)

Protein Refseq [NP_000086](#)

MIM [600310](#)

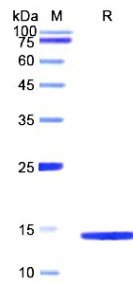
UniProt ID [P49747](#)

 Tel: 1-631-559-9269 1-516-512-3133

 Email: info@creative-biomart.com  Fax: 1-631-938-8127

 45-1 Ramsey Road, Shirley, NY 11967, USA

SDS-PAGE



 Tel: 1-631-559-9269 1-516-512-3133

 Email: info@creative-biomart.com  Fax: 1-631-938-8127

 45-1 Ramsey Road, Shirley, NY 11967, USA