

Recombinant Human COMP Protein, Myc/DDK-tagged, C13 and N15-labeled

Cat. No. COMP-566H Lot. No. (See product label)

SPECIFICATION

Product Overview

COMP MS Standard C13 and N15-labeled recombinant protein (NP_000086) with a C-terminal MYC/DDK tag, was expressed in HEK293 cells.

Species

Human

Source

HEK293

Description

The protein encoded by this gene is a noncollagenous extracellular matrix (ECM) protein. It consists of five identical glycoprotein subunits, each with EGF-like and calcium-binding (thrombospondin-like) domains. Oligomerization results from formation of a five-stranded coiled coil and disulfides. Binding to other ECM proteins such as collagen appears to depend on divalent cations. Contraction or expansion of a 5 aa aspartate repeat and other mutations can cause pseudoachondroplasia (PSACH) and multiple epiphyseal dysplasia (MED).

Molecular Mass

82.9 kDa

AA Sequence

MVPDTACVLLLLTLAALGASGQGQSPLGSDLGPQMLRELQETNAALQDVRELLRQQV
REITFLKNTVMECDACGMQQSVRTGLPSVRPLLHCAPGFCFPGVACIQTESGARCG
PCPAGFTGNGSHCTDVNECNAHPCFPRVRCINTSPGFRCEACPPGYSGPTHQGVG
LAFKANKQVCTDINECETGQHNCVPNSVCINTRGSFQCGPCQPGFVGDQASGCQ
RRAQRFPCDGSPSECHEHADCVLERDGSRSVCVAVGWAGNGILCGRDLDLGGFP
DEKLRCPERQCRKDNCVTPNSGQEDVDRDGIGDACPDADGDGVPNEKDNCPL

 Tel: 1-631-559-9269 1-516-512-3133

 Email: info@creative-biomart.com  Fax: 1-631-938-8127

 45-1 Ramsey Road, Shirley, NY 11967, USA



VRNPDQRNTDEDKWGDACDNCRSQKNDDQKDTDQDGRGDACDDDDIDGDRIRNQ
 ADNCPRVPSDQKDSGDGIGDADNCPCQKSNPDQADVDHDFVGDACDSDQDQD
 GDGHQDSRDNCPTVPNSAQEDSDHDGQGDACDDDDNDGVPDSRDNCRLVNP
 GQEDADRDGVDVCQDDFDADKVVDKIDVCPENAEVTLTDFRAFQTVVLDPEGDA
 QIDPNWVVLNQGREIVQTMNSDPGLAVGYTAFNGVDFEGTFHVNTVTDDDYAGFIF
 GYQDSSSFYVVMWKQMEQTYWQANPFRAVAEPIQLKAVKSSTGPGEQLRNALW
 HTGDTESQVRLWLDKPRNVGWKDKKSYRWFLQHRPQVGYIRVRFYEGPELVADSN
 VVLDTTMRGGRLGVFCFSQENIIWANLRYRCNDTIPEDYETHQLRQASGPTRTRPLE
 QKLISEEDLAANDILDYKDDDDKV

Purity	> 80% as determined by SDS-PAGE and Coomassie blue staining
Stability	Stable for 3 months from receipt of products under proper storage and handling conditions.
Storage	Store at -80 centigrade. Avoid repeated freeze-thaw cycles.
Concentration	50 µg/mL as determined by BCA
Storage Buffer	100 mM glycine, 25 mM Tris-HCl, pH 7.3.

GENE INFORMATION

Gene Name	COMP cartilage oligomeric matrix protein [Homo sapiens (human)]
Official Symbol	COMP
Synonyms	COMP; cartilage oligomeric matrix protein; cartilage oligomeric matrix protein (pseudoachondroplasia, epiphyseal dysplasia 1, multiple), EDM1, EPD1, PSACH; MED; THBS5; thrombospondin 5; TSP5; thrombospondin-5; pseudoachondroplasia (epiphyseal dysplasia 1, multiple); cartilage oligomeric matrix

- Tel: 1-631-559-9269 1-516-512-3133
- Email: info@creative-biomart.com Fax: 1-631-938-8127
- 45-1 Ramsey Road, Shirley, NY 11967, USA

protein(pseudoachondroplasia, epiphyseal dysplasia 1, multiple); cartilage oligomeric matrix protein (pseudoachondroplasia, epiphyseal dysplasia 1, multiple); EDM1; EPD1; PSACH; MGC131819; MGC149768;

Gene ID 1311

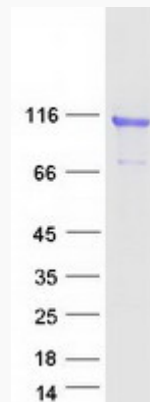
mRNA Refseq NM_000095

Protein Refseq NP_000086

MIM 600310

UniProt ID P49747

SDS-PAGE



 Tel: 1-631-559-9269 1-516-512-3133

 Email: info@creative-biomart.com  Fax: 1-631-938-8127

 45-1 Ramsey Road, Shirley, NY 11967, USA