

Recombinant Human catechol O methyltransferase Protein, His tagged

Cat. No. COMT-001H **Lot. No.** (See product label)

SPECIFICATION

Product Overview	Recombinant Human COMT Protein with C-His tag was expressed in E. coli.
Species	Human
Source	E.coli
ProteinLength	52-271 aa
Description	Catechol-O-methyltransferase catalyzes the transfer of a methyl group from S-adenosylmethionine to catecholamines, including the neurotransmitters dopamine, epinephrine, and norepinephrine. This O-methylation results in one of the major degradative pathways of the catecholamine transmitters. In addition to its role in the metabolism of endogenous substances, COMT is important in the metabolism of catechol drugs used in the treatment of hypertension, asthma, and Parkinson disease. COMT is found in two forms in tissues, a soluble form (S-COMT) and a membrane-bound form (MB-COMT). The differences between S-COMT and MB-COMT reside within the N-termini. Several transcript variants are formed through the use of alternative translation initiation sites and promoters.
Tag	C-His
Molecular Mass	26 kDa
AA Sequence	MGDTKEQRILNHVLQHAEPGNAQSVLEAIDTYCEQKEWAMNVGDKKGKIVDAVIQE

 Tel: 1-631-559-9269 1-516-512-3133

 Email: info@creative-biomart.com  Fax: 1-631-938-8127

 45-1 Ramsey Road, Shirley, NY 11967, USA



HQPSVLELGAYCGYSAVRMARLLSPGARLITIEINPDCAAITQRMVDFAGMKDKVTL
VVGASQDIIPQLKKKYDVDTLDMVFLDHWKDRYLPDTLLLEECGLLRKGTVLLADNVI
CPGAPDFLAHV RGSSCFECTHYQS FLEYREVV DGLEKAIYKGP GSEAGPHHHHHH
HH

Endotoxin < 1 EU/μg by LAL

Purity > 90% by SDS-PAGE

Storage Store it under sterile conditions at -20 to -80 centigrade. It is recommended that the protein be aliquoted for optimal storage. Avoid repeated freeze-thaw cycles.

Storage Buffer Sterile PBS, pH7.4

Concentration 1 mg/mL by BCA

GENE INFORMATION

Gene Name COMT catechol-O-methyltransferase [Homo sapiens (human)]

Official Symbol COMT

Synonyms COMT; catechol-O-methyltransferase; catechol O-methyltransferase

Gene ID 1312

mRNA Refseq NM_000754

Protein Refseq NP_000745

MIM 116790

Tel: 1-631-559-9269 1-516-512-3133

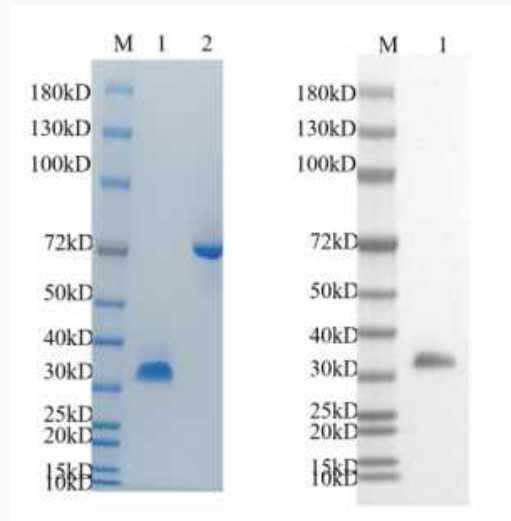
Email: info@creative-biomart.com Fax: 1-631-938-8127

45-1 Ramsey Road, Shirley, NY 11967, USA

UniProt ID

P21964

Reducing 4%-20%
SDS-PAGE (CBB
stained) and WB
(Anti-His Mouse
Monoclonal
antibody) analysis
profiles of purified
COMT.



1. COMT: 1 μ g
2. BSA: 1 μ g

 Tel: 1-631-559-9269 1-516-512-3133

 Email: info@creative-biomart.com  Fax: 1-631-938-8127

 45-1 Ramsey Road, Shirley, NY 11967, USA