

Recombinant Human Catechol-O-Methyltransferase

Cat. No. COMT-1253H **Lot. No.** (See product label)

SPECIFICATION

Product Overview COMT Human Recombinant produced in E.Coli is a single, non-glycosylated polypeptide chain containing 221 amino acids (51-271 a.a.) & having a molecular mass of 24.4 kDa. The COMT is purified by proprietary chromatographic techniques.

Species Human

Source Human

ProteinLength 51-271 a.a.

Description COMT catalyzes the transfer of a methyl group from S-adenosylmethionine (SAM) to catechol substrates such as the neurotransmitters dopamine, epinephrine, and norepinephrine. This O-methylation results in one of the main degradative pathways of the catecholamine transmitters. COMT is located in the postsynaptic neuron and is involved in the metabolism of catechol estrogen drugs used in the treatment of hypertension, asthma, Parkinson disease and the inactivation of catecholamine neurotransmitters through enzymatic degradation. COMT appears in tissues in 2 forms, a soluble form and a membrane-bound form which differ in their N-termini. COMT inhibitors prevent levodopa degradation, increase its availability and are used in the treatment of patients with Parkinson's disease.

Form COMT protein in 20mM Tris-buffer, pH-8, 1mM MgCl₂ and 10% Glycerol.

Purity Greater than 95.0% as determined by SDS-PAGE.

 Tel: 1-631-559-9269 1-516-512-3133

 Email: info@creative-biomart.com  Fax: 1-631-938-8127

 45-1 Ramsey Road, Shirley, NY 11967, USA

Physical Appearance	Sterile Filtered clear solution.
Amino acid sequence	MGDTKEQRIL NHVLQHAEPG NAQSVLEAID TYCEQKEWAM NVGDKKGGKIV DAVIQEHQPS VLLELGAYCG YSAVRMARLL SPGARLITIE INPDCAAITQ RMVDFAGVKD KVTLVVGASQ DIIPQLKKKY DVDTLDMVFL DHWKDRYLPD TLLLEECGLL RKGTVLLADN VICPGAPDFL AHVRGSSCFE CTHYQSFLY REVVDGLEKA IYKGGPSEAG P.
Storage	Store vial at -20°C to -80°C. When stored at the recommended temperature, this protein is stable for 12 months. Please prevent freeze-thaw cycles.

GENE INFORMATION

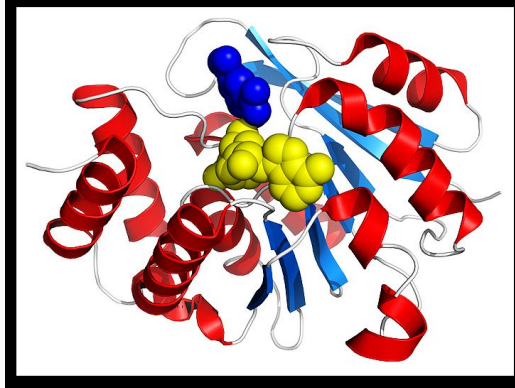
Gene Name	COMT catechol-O-methyltransferase [Homo sapiens]
Official Symbol	COMT
Synonyms	COMT; catechol-O-methyltransferase; EC 2.1.1.6
Gene ID	1312
mRNA Refseq	NM_000754
Protein Refseq	NP_000745
MIM	116790
UniProt ID	P21964
Chromosome Location	22q11.21-q11.23; 22q11.21

Pathway

Tyrosine metabolism; Biological oxidations; Synaptic Transmission

Functioncatechol O-methyltransferase activity; catechol O-methyltransferase activity;
magnesium ion binding; protein binding; transferase activity

**Cartoon diagram
of human COMT in
complex with 3,5-
dinitrocatechol (dark
blue) and S-adenosyl
methionine (yellow).
From PDB 3BWM**



 Tel: 1-631-559-9269 1-516-512-3133

 Email: info@creative-biomart.com  Fax: 1-631-938-8127

 45-1 Ramsey Road, Shirley, NY 11967, USA