

Recombinant Human COMT Protein, GST-tagged

Cat. No. COMT-1688H Lot. No. (See product label)

SPECIFICATION

Product Overview	Human COMT full-length ORF (AAH00419.2, 1 a.a. - 182 a.a.) recombinant protein with GST-tag at N-terminal.
Species	Human
Source	Wheat Germ
Description	Catechol-O-methyltransferase catalyzes the transfer of a methyl group from S-adenosylmethionine to catecholamines, including the neurotransmitters dopamine, epinephrine, and norepinephrine. This O-methylation results in one of the major degradative pathways of the catecholamine transmitters. In addition to its role in the metabolism of endogenous substances, COMT is important in the metabolism of catechol drugs used in the treatment of hypertension, asthma, and Parkinson disease. COMT is found in two forms in tissues, a soluble form (S-COMT) and a membrane-bound form (MB-COMT). The differences between S-COMT and MB-COMT reside within the N-termini. Several transcript variants are formed through the use of alternative translation initiation sites and promoters. [provided by RefSeq, Sep 2008]
Molecular Mass	45.76 kDa
AA Sequence	MNVGDKKGGKIVDAVIQEHQPSVLLLELGAYCGYSAVRMARLLSPGARLITIEINPDCAAI TQRMVDFAGMKDKVTLVVGASQDIIPQLKKKYDVDTLDMVFLDHWKDRYLPDTLLLE ECGLLRKGTVLLADNVICPGAPDFLAHVVRGSSCFECTHYQSFLYREVVDGLEKAIY

 Tel: 1-631-559-9269 1-516-512-3133

 Email: info@creative-biomart.com  Fax: 1-631-938-8127

 45-1 Ramsey Road, Shirley, NY 11967, USA

	KGPGSEAGP
Applications	Enzyme-linked Immunoabsorbent Assay Western Blot (Recombinant protein) Antibody Production Protein Array
Notes	Best use within three months from the date of receipt of this protein.
Storage	Store at -80 centigrade. Aliquot to avoid repeated freezing and thawing.
Storage Buffer	50 mM Tris-HCl, 10 mM reduced Glutathione, pH=8.0 in the elution buffer.
GENE INFORMATION	
Gene Name	COMT catechol-O-methyltransferase [Homo sapiens]
Official Symbol	COMT
Synonyms	COMT; catechol-O-methyltransferase; catechol O-methyltransferase;
Gene ID	1312
mRNA Refseq	NM_000754
Protein Refseq	NP_000745
MIM	116790
UniProt ID	P21964

 Tel: 1-631-559-9269 1-516-512-3133

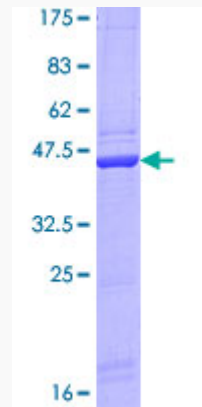
 Email: info@creative-biomart.com  Fax: 1-631-938-8127

 45-1 Ramsey Road, Shirley, NY 11967, USA



Quality Control

Testing:



12.5% SDS-PAGE Stained with Coomassie Blue.

Tel: 1-631-559-9269 1-516-512-3133

Email: info@creative-biomart.com Fax: 1-631-938-8127

45-1 Ramsey Road, Shirley, NY 11967, USA