

Recombinant Human COMT Protein (Gly52-Pro271), N-His tagged

Cat. No. COMT-1779H Lot. No. (See product label)

SPECIFICATION

Product Overview	Recombinant human COMT (Gly52-Pro271) fused with N-His tag was expressed in E. coli.
Species	Human
Source	E.coli
ProteinLength	Gly52-Pro271
Form	Lyophilized powder/frozen liquid
Molecular Mass	26.63 kDa
Purity	>90% as determined by SDS-PAGE
Notes	For research use only.
Storage	Use a manual defrost freezer and avoid repeated freeze thaw cycles. Store at 2 to 8 centigrade for one week. Store at -20 to -80 centigrade for twelve months from the date of receipt.
Storage Buffer	0.01M PBS, pH 7.4, 0.02% NLS
Reconstitution	Reconstitute in sterile water for a stock solution.

 Tel: 1-631-559-9269 1-516-512-3133

 Email: info@creative-biomart.com  Fax: 1-631-938-8127

 45-1 Ramsey Road, Shirley, NY 11967, USA

Shipping They are shipped out with dry ice/blue ice unless customers require otherwise.

GENE INFORMATION

Gene Name COMT catechol-O-methyltransferase [Homo sapiens (human)]

Official Symbol COMT

Synonyms COMT; catechol-O-methyltransferase; catechol O-methyltransferase;

Gene ID 1312

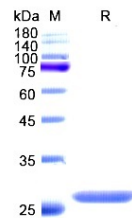
mRNA Refseq NM_000754

Protein Refseq NP_000745

MIM 116790

UniProt ID P21964

SDS-PAGE



 Tel: 1-631-559-9269 1-516-512-3133

 Email: info@creative-biomart.com  Fax: 1-631-938-8127

 45-1 Ramsey Road, Shirley, NY 11967, USA