

Recombinant Human COMT Protein, Myc/DDK-tagged, C13 and N15-labeled

Cat. No. COMT-3037H **Lot. No.** (See product label)

SPECIFICATION

Product Overview	COMT MS Standard C13 and N15-labeled recombinant protein (NP_000745) with a C-terminal MYC/DDK tag, was expressed in HEK293 cells.
Species	Human
Source	HEK293
Description	Catechol-O-methyltransferase catalyzes the transfer of a methyl group from S-adenosylmethionine to catecholamines, including the neurotransmitters dopamine, epinephrine, and norepinephrine. This O-methylation results in one of the major degradative pathways of the catecholamine transmitters. In addition to its role in the metabolism of endogenous substances, COMT is important in the metabolism of catechol drugs used in the treatment of hypertension, asthma, and Parkinson disease. COMT is found in two forms in tissues, a soluble form (S-COMT) and a membrane-bound form (MB-COMT). The differences between S-COMT and MB-COMT reside within the N-termini. Several transcript variants are formed through the use of alternative translation initiation sites and promoters.
Molecular Mass	20 kDa
AA Sequence	MNVGDKKGGKIVDAVIQEHQPSVLLLELGAYCGYS AVR MARLLSPGARLITIEINPDCAAI TQRMVDFAGMKDKVTLVVGASQDIIPQLKKKYD VDTLDMVFLDHWKDRYLPDTLLLE ECGLLRKGTVLLADNVICPGAPDFLAHV RGSSCFECTHYQS FLEYREVVDGLEKAIY

 Tel: 1-631-559-9269 1-516-512-3133

 Email: info@creative-biomart.com  Fax: 1-631-938-8127

 45-1 Ramsey Road, Shirley, NY 11967, USA



KGPGSEAGPTRTRPLEQKLISEEDLAANDILDYKDDDDKV

Purity > 80% as determined by SDS-PAGE and Coomassie blue staining

Stability Stable for 3 months from receipt of products under proper storage and handling conditions.

Storage Store at -80 centigrade. Avoid repeated freeze-thaw cycles.

Concentration 50 µg/mL as determined by BCA

Storage Buffer 100 mM glycine, 25 mM Tris-HCl, pH 7.3.

GENE INFORMATION

Gene Name [COMT catechol-O-methyltransferase \[Homo sapiens \(human\) \]](#)

Official Symbol [COMT](#)

Synonyms COMT; catechol-O-methyltransferase; catechol O-methyltransferase;

Gene ID [1312](#)

mRNA Refseq [NM_000754](#)

Protein Refseq [NP_000745](#)

MIM [116790](#)

UniProt ID [P21964](#)

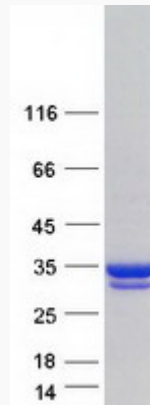
Tel: 1-631-559-9269 1-516-512-3133

Email: info@creative-biomart.com Fax: 1-631-938-8127

45-1 Ramsey Road, Shirley, NY 11967, USA



SDS-PAGE



Tel: 1-631-559-9269 1-516-512-3133

Email: info@creative-biomart.com Fax: 1-631-938-8127

45-1 Ramsey Road, Shirley, NY 11967, USA