

Recombinant Human COP1 Protein, Myc/DDK-tagged, C13 and N15-labeled

Cat. No. COP1-1483H **Lot. No.** (See product label)

SPECIFICATION

Product Overview	RFWD2 MS Standard C13 and N15-labeled recombinant protein (NP_071902) with a C-terminal MYC/DDK tag, was expressed in HEK293 cells.
Species	Human
Source	HEK293
Description	COP1 (COP1 E3 Ubiquitin Ligase) is a Protein Coding gene. Diseases associated with COP1 include Autism. Among its related pathways are Regulation of activated PAK-2p34 by proteasome mediated degradation and Direct p53 effectors. An important paralog of this gene is WDR81.
Molecular Mass	80.5 kDa
AA Sequence	<p>MSGSRQAGSGSAGTSPGSSAASSVTSASSSLSSSPSPPSVAVSAAALVSGGVAQA AGSGGLGGPVRPVLVAPAVSGSGGGAVSTGLSRHSCAARPSAGVGGSSSSLGSG SRKRPLLAPLCNGLINSYEDKSNDFVCPICFDMIEEAYMTKCGHSFCYKCIHQSLDN NRCPKCNYVDNIDHLYPNFLVNELILKQKRFEEKRFKLDHSVSSTNGHRWQIFQD WLGTDQDNLDLANVNLMLLELLVQKKKQLEAESHAACLQILMEFLKVARRNKREQL QIQKELSVLEEDIKRVEEMSGLYSPVSEDSTVPQFEAPSPSHSSIIDSTEYSQPPGFS GSSQTKKQPWYNSTLASRRKRLTAHFEDLEQCYFSTRMSRISDDSRITASQLDEFQE CLSKFTRYNSVRPLATLSYASDLYNGSSIVSSIEFDRDCDYFAIAGVTKKIKVYDYDTV IQDAVDIHYPENEMTCNSKISCISWSSYHKLLASSDYEGTVILWDGFTGQRSKVYQ</p>

 Tel: 1-631-559-9269 1-516-512-3133

 Email: info@creative-biomart.com  Fax: 1-631-938-8127

 45-1 Ramsey Road, Shirley, NY 11967, USA

EHEKRCWSVDFNLMDPKLLASGSDDAKVKLWSTNLDNSVASIEAKANVCCVKFSPS
 SRYHLAFGCADHCVHYYDLRNTKQPIMVFKGHRKAVSYAKFVSGEEIVSASTDSQL
 KLWNVGKPYCLRSFKGHINEKNFVGLASNGDYIACGSENNSLYLYYKGLSKTLLTFK
 FDTVKSVLDKDRKEDDTNEFVSAVCWRALPDGESNVLIAANSQGTIKVLELVTRTRP
 LEQKLISEEDLAANDILDYKDDDDKV

Purity > 80% as determined by SDS-PAGE and Coomassie blue staining

Stability Stable for 3 months from receipt of products under proper storage and handling conditions.

Storage Store at -80 centigrade. Avoid repeated freeze-thaw cycles.

Concentration 50 µg/mL as determined by BCA

Storage Buffer 100 mM glycine, 25 mM Tris-HCl, pH 7.3.

GENE INFORMATION

Gene Name COP1 COP1 E3 ubiquitin ligase [[Homo sapiens \(human\)](#)]

Official Symbol [COP1](#)

Synonyms COP1; COP1 E3 ubiquitin ligase; FAP78; RFWD2; CFAP78; RNF200; E3 ubiquitin-protein ligase COP1; E3 ubiquitin-protein ligase RFWD2; RING finger protein 200; RING-type E3 ubiquitin transferase RFWD2; constitutive photomorphogenesis protein 1 homolog; constitutive photomorphogenic protein 1; putative ubiquitin ligase COP1; ring finger and WD repeat domain 2, E3 ubiquitin protein ligase; EC 2.3.2.27

Gene ID [64326](#)

 Tel: 1-631-559-9269 1-516-512-3133

 Email: info@creative-biomart.com  Fax: 1-631-938-8127

 45-1 Ramsey Road, Shirley, NY 11967, USA

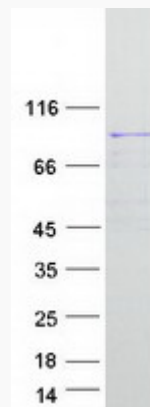
mRNA Refseq [NM_022457](#)

Protein Refseq [NP_071902](#)

MIM [608067](#)

UniProt ID [Q8NHY2](#)

SDS-PAGE



 Tel: 1-631-559-9269 1-516-512-3133

 Email: info@creative-biomart.com  Fax: 1-631-938-8127

 45-1 Ramsey Road, Shirley, NY 11967, USA