

Recombinant Full Length Human COP1 Protein, C-Flag-tagged

Cat. No. COP1-893HFL Lot. No. (See product label)

SPECIFICATION

Product Overview	Recombinant Full Length Human COP1 Protein, fused to Flag-tag at C-terminus, was expressed in Mammalian cells.
Species	Human
Source	Mammalian Cells
Description	Enables ubiquitin protein ligase activity. Involved in positive regulation of proteasomal ubiquitin-dependent protein catabolic process; proteasome-mediated ubiquitin-dependent protein catabolic process; and response to ionizing radiation. Part of Cul4A-RING E3 ubiquitin ligase complex.
Form	25 mM Tris HCl, pH 7.3, 100 mM glycine, 10% glycerol.
Molecular Mass	80.3 kDa
AA Sequence	<p>MSGSRQAGSGSAGTSPGSSAASSVTSASSSLSSSPSPPSVAVSAAALVSGGVAQA AGSGGLGGPVRPVLV APAVSGSGGGAVSTGLSRHSCAARPSAGVGGSSSSLGSG SRKRPLLAPLCNGLINSYEDKSNDFVCPICF DMIEEAYMTKCGHSFCYKCIHQSLD NNRCPKCNVVDNIDHLYPNFLVNELILKQKQRFEEKRFKLDHS VSSTNGHRWQIF QDWLGTDQDNLDLANVNLMLLELLVQKKKQLEAESHAACLQILMEFLKVARRNKREQ LE QIQKELSVLEEDIKRVEEMSGLYSPVSEDSTVPQFEAPSPSHSSIIDSTEYSQPPG FSGSSQTKKQPWYN STLASRRKRLTAHFEDLEQCYFSTRMSRISDDSRITASQLDEF QECLSKFTRYNSVRPLATLSYASDLYNG SSIVSSIEFDRDCDYFAIAGVTKKIKVYEY DTVIQDAVDIHYPENEMTCNSKISCISWSSYHKNLLASSD YEGTVILWDGFTGQRSK</p>

 Tel: 1-631-559-9269 1-516-512-3133

 Email: info@creative-biomart.com  Fax: 1-631-938-8127

 45-1 Ramsey Road, Shirley, NY 11967, USA

VYQEHEKRCWSVDFNLMDPKLLASGSDDAKVKLWSTNLDNSVASIEAKANVCC VK
 FSPSSRYHLAFGCADHCVHYYDLRNTKQPIMVFKGHRKAVSYAKFVSGEEIVSASTD
 SQLKLWNVGKP YCLRSFKGHINEKNFVGLASNGDYIACGSENNSLYLYYKGLSKTLL
 TFKFDTVKSVLDKDRKEDDTNEFV
 SAVCWRALPDGESNVLIAANSQGTIKVLELVTRTRPLEQKLISEEDLAANDILDYKDD
 DDKV

Purity	> 80% as determined by SDS-PAGE and Coomassie blue staining.
Stability	Stable for 12 months from the date of receipt of the product under proper storage and handling conditions. Avoid repeated freeze-thaw cycles.
Storage	Store at -80 centigrade.
Concentration	>50 ug/mL as determined by microplate BCA method.
Preparation	Recombinant protein was captured through anti-DDK affinity column followed by conventional chromatography steps.
Protein Pathways	p53 signaling pathway, Ubiquitin mediated proteolysis
Full Length	Full L.

GENE INFORMATION

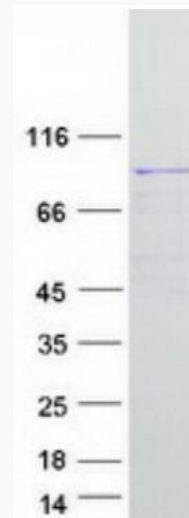
Gene Name	COP1 COP1 E3 ubiquitin ligase [Homo sapiens (human)]
Official Symbol	COP1
Synonyms	FAP78; RFWD2; CFAP78; RNF200

 Tel: 1-631-559-9269 1-516-512-3133

 Email: info@creative-biomart.com  Fax: 1-631-938-8127

 45-1 Ramsey Road, Shirley, NY 11967, USA

Gene ID	64326
mRNA Refseq	NM_022457.7
Protein Refseq	NP_071902.2
MIM	608067
UniProt ID	Q8NHY2



Coomassie blue staining of purified COP1 protein.

Tel: 1-631-559-9269 1-516-512-3133

Email: info@creative-biomart.com Fax: 1-631-938-8127

45-1 Ramsey Road, Shirley, NY 11967, USA