

# Recombinant Full Length Human COPB2 Protein, C-Flag-tagged

Cat. No. COPB2-1384HFL    Lot. No. (See product label)

## SPECIFICATION

<b>Product Overview</b>	Recombinant Full Length Human COPB2 Protein, fused to Flag-tag at C-terminus, was expressed in Mammalian cells.
<b>Species</b>	Human
<b>Source</b>	Mammalian Cells
<b>Description</b>	The Golgi coatomer complex (see MIM 601924) constitutes the coat of nonclathrin-coated vesicles and is essential for Golgi budding and vesicular trafficking. It consists of 7 protein subunits, including COPB2.
<b>Form</b>	25 mM Tris HCl, pH 7.3, 100 mM glycine, 10% glycerol.
<b>Molecular Mass</b>	102.3 kDa
<b>AA Sequence</b>	MPLRLDIKRKLTARSDRVKSVDLHPTEPWMLASLYNGSVCVWNHETQTLVKTFEVC DLPVRAAKFVARKN WVVTGADDMQIRVFNYNTLERVHMFEAHSDYIRCIAVHPTQP FILTSSDDMLIKLWDWDKKWSCSQVFEG HTHYVMQIVINPKDNNQFASASLDRTIKV WQLGSSSPNFTLEGHEKGVNCIDYYSGGDKPYLISGADDRL VKIWDYQNKTCVQTL EGHAQNVSCASFPELPIIITGSEDGTVRIWHSSTYRLESTLNYGMERVWCVASL R GSNNVALGYDEGSIIVKLGREEPAMSDANGKIIWAKHSEVQQANLKAMGDAEIKD GERLPLAVKDMGS CEIYPQTIQHNPNGRFVVCGDGEYIIYTAMALRNKSFSGSAQE FAWAHDSSEYAIRESNSIVKIFKNFKE KKSFKPDFGAESYGGFLLGVRVSVNGLAFYD WDNTELRIRIEIQPKHIFWSDSGELVCIATEESFFILKY LSEKVLAAQETHEGVTEDEGI

 Tel: 1-631-559-9269    1-516-512-3133

 Email: [info@creative-biomart.com](mailto:info@creative-biomart.com)     Fax: 1-631-938-8127

 45-1 Ramsey Road, Shirley, NY 11967, USA

EDAFEVLGEIQEIVKTGLWVGDCFIYTSSVNRLNYYVGGGEIVTIAHLDRT MYLLGYIPK  
 DNRLYLGDKELNIISYSLLVSVLEYQTAVMRRDFSMADKVLPTIPKEQRTRVAHFLEK  
 QGF KQQALTVSTDPEHRFELALQLGELKIAYQLAVEAESEQKWKQLAELAISKCQF  
 GLAQECLHHAQDYGGLL LLATASGNANMVNKLAEAGAERDGGKNNVAFMSYFLQGKV  
 DACLELLIRTGRLPEAAFLARTYLPSQVSRVV KLVRENLSKVNQKAAESLADPTEYE  
 NLFPGKKEAFVVEEWVKETHADLWPAKQYPLVTPNEERNVMEEGK DFQPSRSTAQ  
 QELDGKPASPTPVIVASHTANKEEKSLLELEVLDLNLELEDIDTTDINLDEDILDD

**Purity** > 80% as determined by SDS-PAGE and Coomassie blue staining.

**Stability** Stable for 12 months from the date of receipt of the product under proper storage and handling conditions. Avoid repeated freeze-thaw cycles.

**Storage** Store at -80 centigrade.

**Concentration** >50 ug/mL as determined by microplate BCA method.

**Preparation** Recombinant protein was captured through anti-DDK affinity column followed by conventional chromatography steps.

**Protein Families** Druggable Genome

**Full Length** Full L.

## GENE INFORMATION

**Gene Name** COPB2 COPI coat complex subunit beta 2 [ Homo sapiens (human) ]

**Official Symbol** COPB2

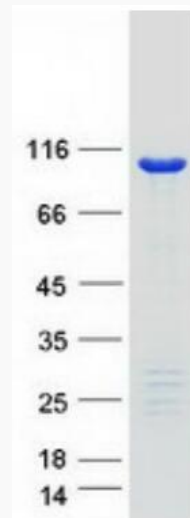
**Synonyms** OPDD; MCPH19; beta'-COP

 Tel: 1-631-559-9269 1-516-512-3133

 Email: [info@creative-biomart.com](mailto:info@creative-biomart.com)  Fax: 1-631-938-8127

 45-1 Ramsey Road, Shirley, NY 11967, USA

Gene ID	9276
mRNA Refseq	NM_004766.3
Protein Refseq	NP_004757.1
MIM	606990
UniProt ID	P35606



Coomassie blue staining of purified COPB2 protein.

Tel: 1-631-559-9269 1-516-512-3133

Email: [info@creative-biomart.com](mailto:info@creative-biomart.com) Fax: 1-631-938-8127

45-1 Ramsey Road, Shirley, NY 11967, USA