

## Recombinant Human COPB2 Protein, GST-tagged

**Cat. No.** COPB2-1693H    **Lot. No.** (See product label)

### SPECIFICATION

<b>Product Overview</b>	Human COPB2 full-length ORF ( NP_004757.1, 1 a.a. - 906 a.a.) recombinant protein with GST-tag at N-terminal.
<b>Species</b>	Human
<b>Source</b>	Wheat Germ
<b>Description</b>	The Golgi coatomer complex (see MIM 601924) constitutes the coat of nonclathrin-coated vesicles and is essential for Golgi budding and vesicular trafficking. It consists of 7 protein subunits, including COPB2.[supplied by OMIM, Jul 2002]
<b>Molecular Mass</b>	128.9 kDa
<b>AA Sequence</b>	<p>MPLRLDIKRKLTARSDRVKSVDLHPTEPWMLASLYNGSVCVWNHETQTLVKTFEVC  DLPVRAAKFVARKNWWVTGADDMQIRVFNNTLERVHMFEAHSDYIRCIAVHPTQP  FILTSSDDMLIKLWDWDKKWSCSQVFEGHTHYVMQIVINPKDNNQFASASLDRTIKV  WQLGSSSPNFTLEGHEKGVNCIDYSSGGDKPYLISGADDRLVKIWDYQNKTCVQTL  EGHAQNVSCASFHPELPIIITGSEDGTVRIWHSSTYRLESTLNYGMERVWCVASLRG  SNNVALGYDEGSIIKLGREEPAMSMANGKIIWAKHSEVQQANLKAMGDAEIKDGE  RLPLAVKDMGSCEIYPQTIQHNPNGRFVVCGDGEYIIYTAMALRNKSFSGAQEF  AHDSSSEYAIRESNSIVKIFKNFKEKKSFKPDFGAESIYGGFLLGVRVSVNGLAFYDWDN  TELIRRIEIQPKHIFWSDSGELVCIATEESFFILKYLSEKVLAAQETHEGVTEGIEDAF  EVLGEIQEIVKTGLWVGDCFIYTSSVNRLNYYVGGGEIVTIAHLDRMTMYLLGYIPKDNRL  YLGDKELNIISYSLLVSVLEYQTAVMRRDFSMADKVLPTIPKEQRTRVAHFLEKQGFK</p>

 Tel: 1-631-559-9269    1-516-512-3133

 Email: [info@creative-biomart.com](mailto:info@creative-biomart.com)     Fax: 1-631-938-8127

 45-1 Ramsey Road, Shirley, NY 11967, USA

QQALTVSTDPEHRFELALQLGELKIAYQLAVEAESEQKWKQLAELAISKCFGLAQE  
 CLHHAQDYGGLLLLLATASGNANMVNKLAEGERDGKNNVAFMSYFLQGKVDACLE  
 LLIRTGRLPEAAFLARTYLPSQVSRVVKLWRENLSKVNQKAAESLADPTEYENLFPG  
 LKEAFVVEEWVKETHADLWPAKQYPLVTPNEERNVMEEGKDFQPSRSTAQQELDG  
 KPASPTPVIVASHTANKEEKSLLELEVLDLNLELEDIDTTDINLDEDILDD

**Applications**  
 Enzyme-linked Immunoabsorbent Assay  
 Western Blot (Recombinant protein)  
 Antibody Production  
 Protein Array

**Notes**  
 Best use within three months from the date of receipt of this protein.

**Storage**  
 Store at -80 centigrade. Aliquot to avoid repeated freezing and thawing.

**Storage Buffer**  
 50 mM Tris-HCl, 10 mM reduced Glutathione, pH=8.0 in the elution buffer.

## GENE INFORMATION

**Gene Name**  
 COPB2 coatomer protein complex, subunit beta 2 (beta prime) [ Homo sapiens ]

**Official Symbol**  
 COPB2

**Synonyms**  
 COPB2; coatomer protein complex, subunit beta 2 (beta prime); coatomer subunit beta; beta COP; betaprime COP; p102; betaprime-COP; beta-coat protein; coatomer binding complex, beta prime subunit; beta-COP;

**Gene ID**  
 9276

**mRNA Refseq**  
 NM\_004766

 Tel: 1-631-559-9269 1-516-512-3133

 Email: [info@creative-biomart.com](mailto:info@creative-biomart.com)  Fax: 1-631-938-8127

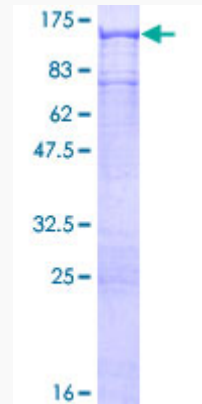
 45-1 Ramsey Road, Shirley, NY 11967, USA

**Protein Refseq** NP\_004757

**MIM** 606990

**UniProt ID** P35606

**Quality Control  
Testing:**



12.5% SDS-PAGE Stained with Coomassie Blue.

 Tel: 1-631-559-9269 1-516-512-3133

 Email: [info@creative-biomart.com](mailto:info@creative-biomart.com)  Fax: 1-631-938-8127

 45-1 Ramsey Road, Shirley, NY 11967, USA