

# Recombinant Human COPB2 Protein, Myc/DDK-tagged, C13 and N15-labeled

Cat. No. COPB2-3684H Lot. No. (See product label)

## SPECIFICATION

<b>Product Overview</b>	COPB2 MS Standard C13 and N15-labeled recombinant protein (NP_004757) with a C-terminal MYC/DDK tag, was expressed in HEK293 cells.
<b>Species</b>	Human
<b>Source</b>	HEK293
<b>Description</b>	The Golgi coatomer complex constitutes the coat of nonclathrin-coated vesicles and is essential for Golgi budding and vesicular trafficking. It consists of 7 protein subunits, including COPB2.
<b>Molecular Mass</b>	102.5 kDa
<b>AA Sequence</b>	<p>MPLRLDIKRKLTARSDRVKSVDLHPTEPWMLASLYNGSVCVWNHETQTLVKTFEVC  DLPVRAAKFVARKNWWVTGADDMQIRVFNYNTLERVHMFEAHSYIRCIAVHPTQP  FILTSSDDMLIKLWDWDKKWSCSQVFEGHTHYVMQIVINPKDNNQFASASLDRTIKV  WQLGSSSPNFTLEGHEKGVNCIDYSSGGDKPYLISGADDRLVKIWDYQNKTCVQTL  EGHAQNVSCASFPELPIIITGSEDGTVRIWHSSTYRLESTLNYGMERVWCVASLRG  SNNVALGYDEGSIIVKLGREEPAMSMDANGKIIWAKHSEVQQANLKAMGDAEIKDGE  RLPLAVKDMGSCEIYPQTIQHNPNGRFVVCGDGEYIIYTAMALRNKSFSGAQEF  AWAHSSEYAIRESNSIVKIFKNFKEKKSFKPDFGAESYGGFLLGVRVSVNGLAFYDWDN  TELIRRIEIQPKHIFWSDSGELVCIATEESFFILKYLSEKVLAAQETHEGVTEGIEDAF  EVLGEIQEIVKTGLWVGDCFIYTSSVNRLNYYYVGGEIVTIAHLDRMTMYLLGYIPKDNRL</p>

 Tel: 1-631-559-9269 1-516-512-3133

 Email: [info@creative-biomart.com](mailto:info@creative-biomart.com)  Fax: 1-631-938-8127

 45-1 Ramsey Road, Shirley, NY 11967, USA

YLGDKELNIIISYSLLVSVLEYQTAVMRRDFSMADKVLPTIPKEQRTRVAHFLEKQGFK  
 QQALTVSTDPEHRFELALQLGELKIAYQLAVEAESEQKWKQLAELAISKCQFGLAQE  
 CLHHAQDYGGLLLLLATASGNANMVNKLAEGERDYGKNNVAFMSYFLQGKVDACLE  
 LLIRTGRLPEAAFLARTYLPSQVSRVVKLWRENLSKVNQKAAESLADPTEYENLFPG  
 LKEAFVVEEWVKETHADLWPAKQYPLVTPNEERNVMEEGKDFQPSRSTAQQELD  
 KPASPTPVIVASHTANKEEKSLLELEVLDLNLELEDIDTTDINLDEDILDDTRTRPLEQ  
 KLISEEDLAANDILDYKDDDDKV

**Purity** > 80% as determined by SDS-PAGE and Coomassie blue staining

**Stability** Stable for 3 months from receipt of products under proper storage and handling conditions.

**Storage** Store at -80 centigrade. Avoid repeated freeze-thaw cycles.

**Concentration** 50 µg/mL as determined by BCA

**Storage Buffer** 100 mM glycine, 25 mM Tris-HCl, pH 7.3.

## GENE INFORMATION

**Gene Name** COPB2 COPI coat complex subunit beta 2 [ Homo sapiens (human) ]

**Official Symbol** COPB2

**Synonyms** COPB2; coatomer protein complex, subunit beta 2 (beta prime); coatomer subunit beta; beta COP; betaprime COP; p102; betaprime-COP; beta-coat protein; coatomer binding complex, beta prime subunit; beta-COP;

**Gene ID** 9276

 Tel: 1-631-559-9269 1-516-512-3133

 Email: [info@creative-biomart.com](mailto:info@creative-biomart.com)  Fax: 1-631-938-8127

 45-1 Ramsey Road, Shirley, NY 11967, USA

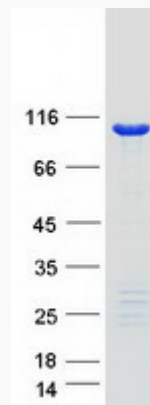
mRNA Refseq [NM\\_004766](#)

Protein Refseq [NP\\_004757](#)

MIM [606990](#)

UniProt ID [P35606](#)

SDS-PAGE



 Tel: 1-631-559-9269 1-516-512-3133

 Email: [info@creative-biomart.com](mailto:info@creative-biomart.com)  Fax: 1-631-938-8127

 45-1 Ramsey Road, Shirley, NY 11967, USA