

# Recombinant Human COPG1 Protein, Myc/DDK-tagged, C13 and N15-labeled

Cat. No. COPG1-3841H Lot. No. (See product label)

## SPECIFICATION

### Product Overview

COPG MS Standard C13 and N15-labeled recombinant protein (NP\_057212) with a C-terminal MYC/DDK tag, was expressed in HEK293 cells.

### Species

Human

### Source

HEK293

### Description

COPG1 (COPI Coat Complex Subunit Gamma 1) is a Protein Coding gene. Diseases associated with COPG1 include Parainfluenza Virus Type 3. Among its related pathways are Transport to the Golgi and subsequent modification and Metabolism of proteins. Gene Ontology (GO) annotations related to this gene include binding and structural molecule activity. An important paralog of this gene is COPG2.

### Molecular Mass

97.7 kDa

### AA Sequence

MLKKFDKKDEESGGGSPFQHLEKSAVLQEARVFNTPINPRKCAHILTKILYLINQG  
 EHLGTTEATEAFFAMTKLFQSNPDLRRMICYLTIKEMSCIAEDVIIVTSSLTKDMTGK  
 EDNYRGPVAVRALCQITDSTMLQAIERYMKQAIQVVKVPSVSSSALVSSLHLLKCSFDV  
 VKRWVNEAQEAASSDNIMVQYHALGLLYHVRKNDRLAVNKMISKVTRHGLKSPFAY  
 CMMIRVASKQLEEDGSRDPSPLFDIESCLRKNKHEMVVYEAASAVNLPGCSAKELA  
 PAVSVLQLFCSSPKAALRYAAVRTLNKVAMKHPSAVTACNLDLENLVTDSNRSIATL  
 AITLLKTGSESSIDRLMKQISSFMSEISDEFKVVVVQAISALCQKYPRKHAVLMNPLF  
 TMLREEGGFEYKRAIVDCIISIIEENSESKETGLSHLCEFIEDCEFTVLATRILHLLGQE

 Tel: 1-631-559-9269 1-516-512-3133

 Email: [info@creative-biomart.com](mailto:info@creative-biomart.com)  Fax: 1-631-938-8127

 45-1 Ramsey Road, Shirley, NY 11967, USA

GKPTTNPSKYIRFIYNRVVLEHEEVV RAGAVSALAKFGAQNEEMLPSILVLLKRCVMDD  
 DNEVRDRATFYLVNLEQKQKALNAGYILNGLTVSIPGLERALQQYTLEPSEKPFDLKS  
 VPLATAPMAEQRTESTPITAVKQPEKVAATRQEIFQEQLAAVPEFRGLGPLFKSSPE  
 PVALTESETEYVIRCTKHTFTNHMVVFQFDCNTLNDQTLNENTVQMEPTAYEVLCY  
 VPARSLPYNQPGTCYTLVALPKEDPTAVACTFSCMMKFTVKDCDPTTGETDDEGYE  
 DEYVLEDLEVTVADHIQKVMKLNFEAAWDEVGDEFEKEETFTLSTIKTLEEAVGNIVK  
 FLGMHPCERSDKVPDNKNHTHLLLAGVFRGGHDILVRSRLLLLDTVTMQVTARSLEE  
 LPVDIILASVGTTRTRPLEQKLISEEDLAANDILDYKDDDDKV

**Purity** > 80% as determined by SDS-PAGE and Coomassie blue staining

**Stability** Stable for 3 months from receipt of products under proper storage and handling conditions.

**Storage** Store at -80 centigrade. Avoid repeated freeze-thaw cycles.

**Concentration** 50 µg/mL as determined by BCA

**Storage Buffer** 100 mM glycine, 25 mM Tris-HCl, pH 7.3.

## GENE INFORMATION

**Gene Name** [COPG1 COPI coat complex subunit gamma 1 \[ Homo sapiens \(human\) \]](#)

**Official Symbol** [COPG1](#)

**Synonyms** COPG1; coatomer protein complex, subunit gamma 1; COPG; coatomer subunit gamma-1; coat protein gamma-cop; coatomer protein complex subunit gamma 1; coatomer protein complex, subunit gamma; coatomer subunit gamma; gamma-1-COP; gamma-1-coat protein; gamma-COP; gamma-coat protein

 Tel: 1-631-559-9269 1-516-512-3133

 Email: [info@creative-biomart.com](mailto:info@creative-biomart.com)  Fax: 1-631-938-8127

 45-1 Ramsey Road, Shirley, NY 11967, USA

Gene ID 22820

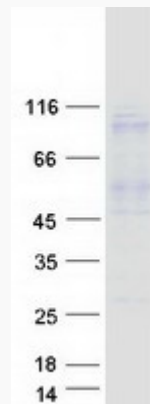
mRNA Refseq NM\_016128

Protein Refseq NP\_057212

MIM 615525

UniProt ID Q9Y678

SDS-PAGE



Tel: 1-631-559-9269 1-516-512-3133

Email: [info@creative-biomart.com](mailto:info@creative-biomart.com) Fax: 1-631-938-8127

45-1 Ramsey Road, Shirley, NY 11967, USA