

Recombinant Human COPG1 protein, GST-tagged

Cat. No. COPG1-6574H Lot. No. (See product label)

SPECIFICATION

Product Overview	Recombinant Human COPG1 protein(350-699 aa), fused with N-terminal GST tag, was expressed in E.coli.
Species	Human
Source	E.coli
ProteinLength	350-699 aa
Form	The purified protein was lyophilized from sterile phosphate-buffered saline (PBS: 58 mM Na ₂ HPO ₄ , 17 mM NaH ₂ PO ₄ , 68 mM NaCl, pH 8.0). Prior to lyophilization, 5% (w/v) trehalose and 5% (w/v) mannitol were incorporated as cryoprotective excipients. The protein was eluted with a buffer containing 100 mM reduced glutathione (GSH).
AASequence	RDRATFYLVNLEQKQKALNAGYILNGLTVSIPGLERALQQYTLEPSEKPFDLKSVPLA TAPMAEQRTESTPITAVKQPEKVAATRQEIFQEQLAAVPEFRGLGPLFKSSPEPVAL TESETEYVIRCTKHTFTNHMVVFQFDCTNTLNDQTLNVTVMQMEPTEAYEVLCYV SLPYNQPGTCYTLVALPKEDPTAVACTFSCMMKFTVKDCDPTTGETDDEGYEDEYV LEDLEVTVADHIQKVMKLNFEAAWDEVGDEFEKEETFTLSTIKTLEEAVGNIVKFLGM HPCERSDKVPDNKNHTHLLLAGVFRGGHDILVRSLLLLDTVTM QVTARSLEELPVDI ILASVG
Purity	85%, by SDS-PAGE with Coomassie Brilliant Blue staining.

 Tel: 1-631-559-9269 1-516-512-3133

 Email: info@creative-biomart.com  Fax: 1-631-938-8127

 45-1 Ramsey Road, Shirley, NY 11967, USA

Storage Store at 2-8°C for 1-2 weeks. Aliquot and store at -20°C to -80°C for up to 3 months, reconstitution with sterile water and addition of an equal volume of glycerol. Avoid repeat freeze-thaw cycles.

Reconstitution Dissolve the product in 200 µl sterile water to achieve a working concentration of 0.25 g/µl. If experimental compatibility allows, mix the aqueous solution with an equal volume of glycerol (1:1 ratio) after initial reconstitution.

GENE INFORMATION

Gene Name [COPG1 coatomer protein complex, subunit gamma 1 \[Homo sapiens \]](#)

Official Symbol [COPG1](#)

Synonyms [COPG](#)

Gene ID [22820](#)

mRNA Refseq [NM_016128.3](#)

Protein Refseq [NP_057212.1](#)

UniProt ID [Q9Y678](#)

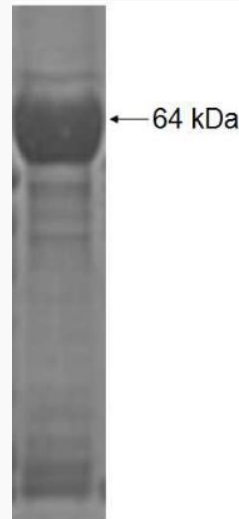
 Tel: 1-631-559-9269 1-516-512-3133

 Email: info@creative-biomart.com  Fax: 1-631-938-8127

 45-1 Ramsey Road, Shirley, NY 11967, USA



SDS-PAGE



☎ Tel: 1-631-559-9269 1-516-512-3133

☎ Email: info@creative-biomart.com ☎ Fax: 1-631-938-8127

☎ 45-1 Ramsey Road, Shirley, NY 11967, USA