

## Recombinant Human COPS2 Protein (Met1-Ala443), N-His tagged

Cat. No. COPS2-2278H Lot. No. (See product label)

### SPECIFICATION

|                         |   |
|-------------------------|---|
| <b>Product Overview</b> | Recombinant human COPS2 (Met1-Ala443) fused with N-His tag was expressed in E. coli.  |
| <b>Species</b>          | Human   |
| <b>Source</b>           | E.coli  |
| <b>ProteinLength</b>    | Met1-Ala443   |
| <b>Form</b>             | Lyophilized powder/frozen liquid  |
| <b>Molecular Mass</b>   | 53.91 kDa   |
| <b>Purity</b>           | >90% as determined by SDS-PAGE  |
| <b>Notes</b>            | For research use only.  |
| <b>Storage</b>          | Use a manual defrost freezer and avoid repeated freeze thaw cycles. Store at 2 to 8 centigrade for one week. Store at -20 to -80 centigrade for twelve months from the date of receipt. |
| <b>Storage Buffer</b>   | 0.01M PBS, pH 7.4, 0.02% NLS  |
| <b>Reconstitution</b>   | Reconstitute in sterile water for a stock solution.   |

 Tel: 1-631-559-9269 1-516-512-3133

 Email: [info@creative-biomart.com](mailto:info@creative-biomart.com)  Fax: 1-631-938-8127

 45-1 Ramsey Road, Shirley, NY 11967, USA

**Shipping** They are shipped out with dry ice/blue ice unless customers require otherwise.

## GENE INFORMATION

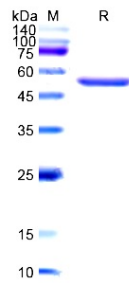
|                        |  |
|------------------------|--|
| <b>Gene Name</b>       | COPS2 COP9 constitutive photomorphogenic homolog subunit 2 (Arabidopsis) [ Homo sapiens (human) ]  |
| <b>Official Symbol</b> | COPS2  |
| <b>Synonyms</b>        | COPS2; COP9 constitutive photomorphogenic homolog subunit 2 (Arabidopsis); COP9 signalosome complex subunit 2; ALIEN; CSN2; TRIP15; TRIP-15; alien homolog; signalosome subunit 2; TR-interacting protein 15; JAB1-containing signalosome subunit 2; thyroid receptor interacting protein 15; thyroid receptor-interacting protein 15; SGN2; |
| <b>Gene ID</b>         | 9318   |
| <b>mRNA Refseq</b>     | NM_001143887   |
| <b>Protein Refseq</b>  | NP_001137359   |
| <b>MIM</b>             | 604508   |
| <b>UniProt ID</b>      | P61201   |

 Tel: 1-631-559-9269 1-516-512-3133

 Email: [info@creative-biomart.com](mailto:info@creative-biomart.com)  Fax: 1-631-938-8127

 45-1 Ramsey Road, Shirley, NY 11967, USA

**SDS-PAGE**



 Tel: 1-631-559-9269 1-516-512-3133

 Email: [info@creative-biomart.com](mailto:info@creative-biomart.com)  Fax: 1-631-938-8127

 45-1 Ramsey Road, Shirley, NY 11967, USA