

Recombinant Human COPS2 protein, GST-tagged

Cat. No. COPS2-25H Lot. No. (See product label)

SPECIFICATION

Product Overview	Recombinant Human COPS2(1-443aa) fused with with GST Tag was expressed in E. coli.
Species	Human
Source	E.coli
ProteinLength	1-443 a.a.
Description	Protein lyophilized in sterile PBS (58 mM Na ₂ HPO ₄ , 17 mM NaH ₂ PO ₄ , 68 mM NaCl, 300 mM Imidazole, pH 8.0). Trehalose (5-8%) and mannitol (5-8%) protectants were added before lyophilization.
AA Sequence	MSDMEDDFMCDDEEDYDLEYSSEDSNSEPNVDLENQYYNSKALKEDDPKAALSSFQ KVLELEGEKGEWGFKALKQMIKINFKLTNFPEMMNRYKQLLYIRSAVTRNYSEKIN SILDYISTSKQMDLLQEFYETTLEALKDAKNDRLWFKTNTKLGKLYLEREEYGKLQKIL RQLHQSCQTDDGEDDLKKGQTQLLEIYALEIQMYTAQKNNKLLKALYEQSLHIKSAIPH PLIMGVIRECGGKMHLREGEFEKAHTDFFEAFKNYDESGSPRRTTCLKYLVLANML MKSGINPFDSQEAKPYKNDPEILAMTNLVSAYQNNNDITEFEKILKTNHSNIMDDPFIRE HIEELLRNIRTQVLIKLIKPYTRIHIPFISKELNIDVADVESLLVQCILDNTIHGRIDQVNQL LELDHQKRGGARYTALDKWTNQLNSLNQAVVSKLA
Purity	95%, by SDS-PAGE with Coomassie Brilliant Blue staining.
Stability	Stability and Storage: Store for up to 12 months at -20 centigrade to -80 centigrade as

 Tel: 1-631-559-9269 1-516-512-3133

 Email: info@creative-biomart.com  Fax: 1-631-938-8127

 45-1 Ramsey Road, Shirley, NY 11967, USA

lyophilized powder.

Storage of Reconstituted Protein: Short-term storage: Store at 2-8 centigrade for two weeks.

Long-term storage: Aliquot and store at -20 centigrade to -80 centigrade for up to 6 months, buffer containing 50% glycerol is recommended for reconstitution. Avoid repeat freeze-thaw cycles.

Reconstitution

Reconstitute at 0.25 g/μl in 200 μl sterile water for short-term storage.

Reconstitution with 200 μl 50% glycerol solution is recommended for longer term storage.

If a different concentration is needed for your purposes please adjust the reconstitution volume as required (please note: the ion concentration of the final solution will vary according to the volume used).

Note: Centrifuge vial before opening. When reconstituting, gently pipet and wash down the sides of the vial to ensure full recovery of the protein into solution.

GENE INFORMATION

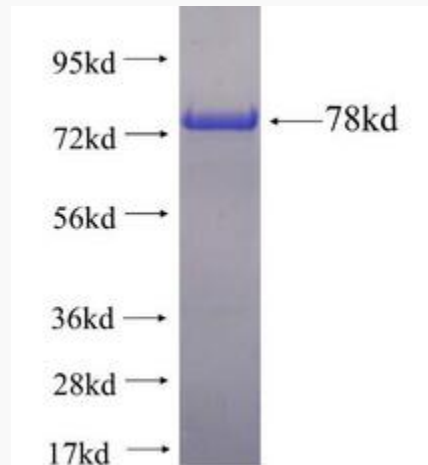
Gene Name	COPS2 COP9 constitutive photomorphogenic homolog subunit 2 (Arabidopsis) [Homo sapiens]
Official Symbol	COPS2
Synonyms	COPS2; COP9 constitutive photomorphogenic homolog subunit 2 (Arabidopsis); COP9 signalosome complex subunit 2; ALIEN; CSN2; TRIP15; TRIP-15; alien homolog; signalosome subunit 2; TR-interacting protein 15; JAB1-containing signalosome subunit 2; thyroid receptor interacting protein 15; thyroid receptor-interacting protein 15; SGN2;
Gene ID	9318

 Tel: 1-631-559-9269 1-516-512-3133

 Email: info@creative-biomart.com  Fax: 1-631-938-8127

 45-1 Ramsey Road, Shirley, NY 11967, USA

mRNA Refseq	NM_001143887
Protein Refseq	NP_001137359
MIM	604508
UniProt ID	P61201
Chromosome Location	15q21.2
Function	protein binding; signal transducer activity;



Tel: 1-631-559-9269 1-516-512-3133

Email: info@creative-biomart.com Fax: 1-631-938-8127

45-1 Ramsey Road, Shirley, NY 11967, USA