

Recombinant Human COPS3 Protein, GST-tagged

Cat. No. COPS3-1702H Lot. No. (See product label)

SPECIFICATION

Product Overview	Human COPS3 full-length ORF (NP_003644.2, 1 a.a. - 423 a.a.) recombinant protein with GST-tag at N-terminal.
Species	Human
Source	Wheat Germ
Description	<p>The protein encoded by this gene possesses kinase activity that phosphorylates regulators involved in signal transduction. It phosphorylates I kappa-Balpa, p105, and c-Jun. It acts as a docking site for complex-mediated phosphorylation. The gene is located within the Smith-Magenis syndrome region on chromosome 17. Several transcript variants encoding different isoforms have been found for this gene. [provided by RefSeq, Oct 2015]</p>
Molecular Mass	74.3 kDa
AA Sequence	<pre>MASALEQFVNSVRQLSAQQQMTQLCELINKSGELLAKNLSHLDTVLGALDVQEHS LGVLAFLVFKFSMPSPDFETLFSQVQLFISTCNGEHIRYATDTFAGLCHQLTNALVER KQPLRGIGILKQAIDKMQMNTNQLTSIHADLCQLCLLAKCFKALPYLDVDMMDICKE NGAYDAKHFLCYYYYGGMIYTGLKNFERALYFYEQAITTPAMAVSHIMLESYKKYILV SLILLGKVQQLPKYTSQIVGRFIKPLSNAYHELAQVYSTNNPSELRLNLVKNHSETFTR DNNMGLVKQCLSSLYKKNIQRLTKTFLTLSLQDMASRVQLSGPQEAKEYVLHMIEDG EIFASINQKDGMSVFDHNPEKYNNPAMLHNIDQEMLKCIELDERLKAMDQEITVNPQ FVQKSMGSQEDDSGNKPSSYS</pre>

 Tel: 1-631-559-9269 1-516-512-3133

 Email: info@creative-biomart.com  Fax: 1-631-938-8127

 45-1 Ramsey Road, Shirley, NY 11967, USA

Applications	Enzyme-linked Immunoabsorbent Assay Western Blot (Recombinant protein) Antibody Production Protein Array
Notes	Best use within three months from the date of receipt of this protein.
Storage	Store at -80 centigrade. Aliquot to avoid repeated freezing and thawing.
Storage Buffer	50 mM Tris-HCl, 10 mM reduced Glutathione, pH=8.0 in the elution buffer.
GENE INFORMATION	
Gene Name	COPS3 COP9 constitutive photomorphogenic homolog subunit 3 (Arabidopsis) [Homo sapiens]
Official Symbol	COPS3
Synonyms	COPS3; COP9 constitutive photomorphogenic homolog subunit 3 (Arabidopsis); COP9 (constitutive photomorphogenic, Arabidopsis, homolog) subunit 3; COP9 signalosome complex subunit 3; CSN3; SGN3; signalosome subunit 3; COP9 complex subunit 3; JAB1-containing signalosome subunit 3;
Gene ID	8533
mRNA Refseq	NM_001199125
Protein Refseq	NP_001186054
MIM	604665

 Tel: 1-631-559-9269 1-516-512-3133

 Email: info@creative-biomart.com  Fax: 1-631-938-8127

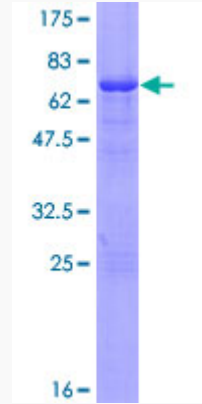
 45-1 Ramsey Road, Shirley, NY 11967, USA

UniProt ID

Q9UNS2

Quality Control

Testing:



12.5% SDS-PAGE Stained with Coomassie Blue.

 Tel: 1-631-559-9269 1-516-512-3133

 Email: info@creative-biomart.com  Fax: 1-631-938-8127

 45-1 Ramsey Road, Shirley, NY 11967, USA