

Recombinant Human COPS8 Protein, Myc/DDK-tagged, C13 and N15-labeled

Cat. No. COPS8-5963H **Lot. No.** (See product label)

SPECIFICATION

Product Overview	COPS8 MS Standard C13 and N15-labeled recombinant protein (NP_937832) with a C-terminal MYC/DDK tag, was expressed in HEK293 cells.
Species	Human
Source	HEK293
Description	The protein encoded by this gene is one of the eight subunits of COP9 signalosome, a highly conserved protein complex that functions as an important regulator in multiple signaling pathways. The structure and function of COP9 signalosome is similar to that of the 19S regulatory particle of 26S proteasome. COP9 signalosome has been shown to interact with SCF-type E3 ubiquitin ligases and act as a positive regulator of E3 ubiquitin ligases. Alternatively spliced transcript variants encoding distinct isoforms have been observed.
Molecular Mass	23.2 kDa
AA Sequence	MPVAVMAESAFSFKLLDQCENQELEAPGGIATPPVYGQLLALYLLHNDMNNARYL WKRIPPAIKSANSELGGIWSVGQRIWQRDFPGIYTTINAHQWSETVQPIMEALRDAT RRRAFALVSQAYTSIIADDFAAFVGLPVVEEAVKGILEQGWQADSTTRMVLPRKPVAG ALDVSNKFIPLSEPAVPPIPNQQQLARLTDYVAFLENTTRTRPLEQKLISEEDLAAND ILDYKDDDDKV
Purity	> 80% as determined by SDS-PAGE and Coomassie blue staining

 Tel: 1-631-559-9269 1-516-512-3133

 Email: info@creative-biomart.com  Fax: 1-631-938-8127

 45-1 Ramsey Road, Shirley, NY 11967, USA

Stability	Stable for 3 months from receipt of products under proper storage and handling conditions.
Storage	Store at -80 centigrade. Avoid repeated freeze-thaw cycles.
Concentration	50 µg/mL as determined by BCA
Storage Buffer	100 mM glycine, 25 mM Tris-HCl, pH 7.3.

GENE INFORMATION

Gene Name	COPS8 COP9 signalosome subunit 8 [Homo sapiens (human)]
Official Symbol	COPS8
Synonyms	COPS8; COP9 constitutive photomorphogenic homolog subunit 8 (Arabidopsis); COP9 signalosome complex subunit 8; COP9; CSN8; MGC1297; SGN8; hCOP9; COP9 homolog; signalosome subunit 8; JAB1-containing signalosome subunit 8; MGC43256;
Gene ID	10920
mRNA Refseq	NM_198189
Protein Refseq	NP_937832
MIM	616011
UniProt ID	Q99627

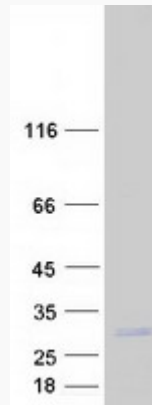
 Tel: 1-631-559-9269 1-516-512-3133

 Email: info@creative-biomart.com  Fax: 1-631-938-8127

 45-1 Ramsey Road, Shirley, NY 11967, USA



SDS-PAGE



☎ Tel: 1-631-559-9269 1-516-512-3133

☎ Email: info@creative-biomart.com ☎ Fax: 1-631-938-8127

☎ 45-1 Ramsey Road, Shirley, NY 11967, USA