

Recombinant Human COPZ1 Protein, GST-tagged

Cat. No. COPZ1-1711H Lot. No. (See product label)

SPECIFICATION

Product Overview	Human COPZ1 full-length ORF (NP_057141.1, 1 a.a. - 177 a.a.) recombinant protein with GST-tag at N-terminal.
Species	Human
Source	Wheat Germ
Description	This gene encodes a subunit of the cytoplasmic coatamer protein complex, which is involved in autophagy and intracellular protein trafficking. The coatamer protein complex is comprised of seven subunits and functions as the coat protein of coat protein complex (COP)I-vesicles. Alternative splicing results in multiple transcript variants. [provided by RefSeq, Nov 2012]
Molecular Mass	46.6 kDa
AA Sequence	MEALILEPSLYTVKAILILDNDGDRLFAKYYDDTYPVKEQKAFEKNIFNKTHRTDSEI ALLEGLTVVYKSSIDLYFYVIGSSYENELMLMAVLNCLFDSLSQMLRKNVEKRALLEN MEGLFLAVDEIVDGGVILESDPQQVVHRVALRGEDVPLTEQTVSQVLQSAKEQIKWS LLR
Applications	Enzyme-linked Immunoabsorbent Assay Western Blot (Recombinant protein) Antibody Production Protein Array

 Tel: 1-631-559-9269 1-516-512-3133

 Email: info@creative-biomart.com  Fax: 1-631-938-8127

 45-1 Ramsey Road, Shirley, NY 11967, USA

Notes	Best use within three months from the date of receipt of this protein.
Storage	Store at -80 centigrade. Aliquot to avoid repeated freezing and thawing.
Storage Buffer	50 mM Tris-HCl, 10 mM reduced Glutathione, pH=8.0 in the elution buffer.

GENE INFORMATION

Gene Name	COPZ1 CGI-120 protein [Homo sapiens]
Official Symbol	COPZ1
Synonyms	COPZ1; CGI-120 protein;
Gene ID	22818
mRNA Refseq	NM_001271734
Protein Refseq	NP_001258663
MIM	615472
UniProt ID	P61923

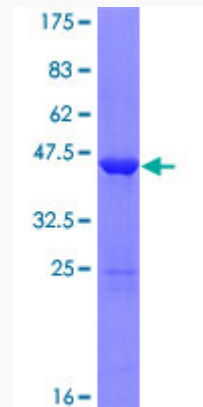
 Tel: 1-631-559-9269 1-516-512-3133

 Email: info@creative-biomart.com  Fax: 1-631-938-8127

 45-1 Ramsey Road, Shirley, NY 11967, USA

Quality Control

Testing:



12.5% SDS-PAGE Stained with Coomassie Blue.

 Tel: 1-631-559-9269 1-516-512-3133

 Email: info@creative-biomart.com  Fax: 1-631-938-8127

 45-1 Ramsey Road, Shirley, NY 11967, USA