

Recombinant Human COPZ1 Protein, Myc/DDK-tagged, C13 and N15-labeled

Cat. No. COPZ1-727H **Lot. No.** (See product label)

SPECIFICATION

Product Overview	COPZ1 MS Standard C13 and N15-labeled recombinant protein (NP_057141) with a C-terminal MYC/DDK tag, was expressed in HEK293 cells.
Species	Human
Source	HEK293
Description	This gene encodes a subunit of the cytoplasmic coatamer protein complex, which is involved in autophagy and intracellular protein trafficking. The coatamer protein complex is comprised of seven subunits and functions as the coat protein of coat protein complex (COP)I-vesicles. Alternative splicing results in multiple transcript variants.
Molecular Mass	20.2 kDa
AA Sequence	MEALILEPSLYTVKAILILDNDGDRLFAKYYDDTYPVKEQKAFEKNIFNKTHRTDSEI ALLEGLTVVYKSSIDLYFYVIGSSYENELMLMAVLNCLFDSLSQMLRKNVEKRALLEN MEGLFLAVDEIVDGGVILESDPQQVVHRVALRGEDVPLTEQTVSQVLQSAKEQIKWS LLRTRTRPLEQKLISEEDLAANDILDYKDDDDKV
Purity	> 80% as determined by SDS-PAGE and Coomassie blue staining
Stability	Stable for 3 months from receipt of products under proper storage and handling conditions.

 Tel: 1-631-559-9269 1-516-512-3133

 Email: info@creative-biomart.com  Fax: 1-631-938-8127

 45-1 Ramsey Road, Shirley, NY 11967, USA

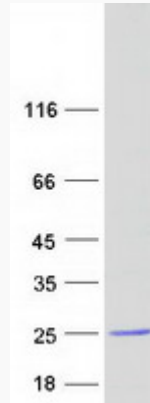
Storage	Store at -80 centigrade. Avoid repeated freeze-thaw cycles.
Concentration	50 µg/mL as determined by BCA
Storage Buffer	100 mM glycine, 25 mM Tris-HCl, pH 7.3.
GENE INFORMATION	
Gene Name	COPZ1 CGI-120 protein [Homo sapiens (human)]
Official Symbol	COPZ1
Synonyms	COPZ1; COPI coat complex subunit zeta 1; COPZ; CGI-120; HSPC181; zeta-COP; zeta1-COP; coatomer subunit zeta-1; coatomer protein complex subunit zeta 1; coatomer protein complex, subunit zeta; zeta-1 COP; zeta-1-coat protein
Gene ID	22818
mRNA Refseq	NM_016057
Protein Refseq	NP_057141
MIM	615472
UniProt ID	P61923

 Tel: 1-631-559-9269 1-516-512-3133

 Email: info@creative-biomart.com  Fax: 1-631-938-8127

 45-1 Ramsey Road, Shirley, NY 11967, USA

SDS-PAGE



 Tel: 1-631-559-9269 1-516-512-3133

 Email: info@creative-biomart.com  Fax: 1-631-938-8127

 45-1 Ramsey Road, Shirley, NY 11967, USA