

## Recombinant Human CORIN Protein (Gly70-Thr136), N-GST tagged

Cat. No. CORIN-1702H Lot. No. (See product label)

### SPECIFICATION

<b>Product Overview</b>	Recombinant human CORIN (Gly70-Thr136) fused with N-GST tag was expressed in E. coli.
<b>Species</b>	Human
<b>Source</b>	E.coli
<b>ProteinLength</b>	Gly70-Thr136
<b>Form</b>	Lyophilized powder/frozen liquid
<b>Molecular Mass</b>	34.07 kDa
<b>Purity</b>	>90% as determined by SDS-PAGE
<b>Notes</b>	For research use only.
<b>Storage</b>	Use a manual defrost freezer and avoid repeated freeze thaw cycles. Store at 2 to 8 centigrade for one week. Store at -20 to -80 centigrade for twelve months from the date of receipt.
<b>Storage Buffer</b>	0.01M PBS, pH 7.4, 0.02% NLS
<b>Reconstitution</b>	Reconstitute in sterile water for a stock solution.

 Tel: 1-631-559-9269 1-516-512-3133

 Email: [info@creative-biomart.com](mailto:info@creative-biomart.com)  Fax: 1-631-938-8127

 45-1 Ramsey Road, Shirley, NY 11967, USA

**Shipping** They are shipped out with dry ice/blue ice unless customers require otherwise.

## GENE INFORMATION

**Gene Name** CORIN corin, serine peptidase [ Homo sapiens (human) ]

**Official Symbol** CORIN

**Synonyms** CORIN; corin, serine peptidase; corin, serine protease; atrial natriuretic peptide-converting enzyme; ATC2; CRN; Lrp4; PRSC; TMPRSS10; pro-ANP-convertase; pro-ANP-converting enzyme; heart specific serine proteinase; transmembrane protease serine 10; heart-specific serine proteinase ATC2; atrial natriuretic peptide-converting enzyme; MGC119742;

**Gene ID** 10699

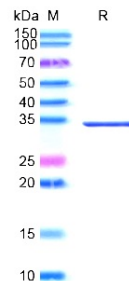
**mRNA Refseq** NM\_006587

**Protein Refseq** NP\_006578

**MIM** 605236

**UniProt ID** Q9Y5Q5

## SDS-PAGE



Tel: 1-631-559-9269 1-516-512-3133

Email: [info@creative-biomart.com](mailto:info@creative-biomart.com) Fax: 1-631-938-8127

45-1 Ramsey Road, Shirley, NY 11967, USA