

## Recombinant Human CORIN Protein, GST-tagged

Cat. No. CORIN-1722H Lot. No. (See product label)

### SPECIFICATION

<b>Product Overview</b>	Human CORIN partial ORF ( NP_006578, 616 a.a. - 715 a.a.) recombinant protein with GST-tag at N-terminal.
<b>Species</b>	Human
<b>Source</b>	Wheat Germ
<b>Description</b>	This gene encodes a member of the type II transmembrane serine protease class of the trypsin superfamily. Members of this family are composed of multiple structurally distinct domains. The encoded protein converts pro-atrial natriuretic peptide to biologically active atrial natriuretic peptide, a cardiac hormone that regulates blood volume and pressure. This protein may also function as a pro-brain-type natriuretic peptide convertase. Multiple alternatively spliced transcript variants encoding different isoforms have been found for this gene. [provided by RefSeq, Jun 2013]
<b>Molecular Mass</b>	36.74 kDa
<b>AA Sequence</b>	CKERDLWECPSNKQCLKHTVICDGFPCPDYMDKNCSCFCQDDELECANHACVSR DLWCDGEADCSDSSDEWDCVTLVINSSSFLMVHRAATEHHVCA
<b>Applications</b>	Enzyme-linked Immunoabsorbent Assay Western Blot (Recombinant protein) Antibody Production Protein Array

 Tel: 1-631-559-9269 1-516-512-3133

 Email: [info@creative-biomart.com](mailto:info@creative-biomart.com)  Fax: 1-631-938-8127

 45-1 Ramsey Road, Shirley, NY 11967, USA

<b>Notes</b>	Best use within three months from the date of receipt of this protein.
<b>Storage</b>	Store at -80 centigrade. Aliquot to avoid repeated freezing and thawing.
<b>Storage Buffer</b>	50 mM Tris-HCl, 10 mM reduced Glutathione, pH=8.0 in the elution buffer.
<b>GENE INFORMATION</b>	
<b>Gene Name</b>	CORIN corin, serine peptidase [ Homo sapiens ]
<b>Official Symbol</b>	CORIN
<b>Synonyms</b>	CORIN; corin, serine peptidase; corin, serine protease; atrial natriuretic peptide-converting enzyme; ATC2; CRN; Lrp4; PRSC; TMPRSS10; pro-ANP-convertase; pro-ANP-converting enzyme; heart specific serine proteinase; transmembrane protease serine 10; heart-specific serine proteinase ATC2; atrial natriuretic peptide-converting enzyme; MGC119742;
<b>Gene ID</b>	10699
<b>mRNA Refseq</b>	NM_006587
<b>Protein Refseq</b>	NP_006578
<b>MIM</b>	605236
<b>UniProt ID</b>	Q9Y5Q5

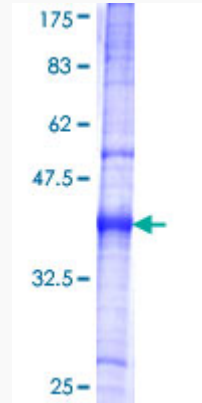
 Tel: 1-631-559-9269 1-516-512-3133

 Email: [info@creative-biomart.com](mailto:info@creative-biomart.com)  Fax: 1-631-938-8127

 45-1 Ramsey Road, Shirley, NY 11967, USA

**Quality Control**

**Testing:**



12.5% SDS-PAGE Stained with Coomassie Blue.

 Tel: 1-631-559-9269 1-516-512-3133

 Email: [info@creative-biomart.com](mailto:info@creative-biomart.com)  Fax: 1-631-938-8127

 45-1 Ramsey Road, Shirley, NY 11967, USA