

Active Recombinant Full Length Human CORIN Protein, C-Flag-tagged

Cat. No. CORIN-274HFL **Lot. No.** (See product label)

SPECIFICATION

| | |
|-------------------------|--|
| Product Overview | Recombinant Full Length Human CORIN Protein, fused to Flag-tag at C-terminus, was expressed in Mammalian cells. |
| Species | Human |
| Source | Mammalian Cells |
| Description | This gene encodes a member of the type II transmembrane serine protease class of the trypsin superfamily. Members of this family are composed of multiple structurally distinct domains. The encoded protein converts pro-atrial natriuretic peptide to biologically active atrial natriuretic peptide, a cardiac hormone that regulates blood volume and pressure. This protein may also function as a pro-brain-type natriuretic peptide convertase. Multiple alternatively spliced transcript variants encoding different isoforms have been found for this gene. |
| Form | 25 mM Tris HCl, pH 7.3, 100 mM glycine, 10% glycerol. |
| Bio-activity | Enzyme activity |
| Molecular Mass | 116.3 kDa |
| AA Sequence | MKQSPALAPEERCRRAGSPKPVLRADDNNMGNGCSQKLATANLLRFLLLVLIPCICALVLLLVILLSYVG TLQKVYFKSNGSEPLVTDGEIQGSDVILTNTIYNQSTVVSTAHPDQHVPAWTTDASLPGDQSHRNTSACM NITHSQCQMLPYHATLTPLLSVVRNMEMEKF |

 Tel: 1-631-559-9269 1-516-512-3133

 Email: info@creative-biomart.com  Fax: 1-631-938-8127

 45-1 Ramsey Road, Shirley, NY 11967, USA

LKFFTYLHRLSCYQHIMLFGCTLAFPECIIDGDDSHGLL PCRSFCEAAKEGCEVSLG
 MVNYSWPDFLRCSQFRNQTSSNVSRICFSPQQENGKQLLCGRGENFLCASG ICIP
 GKLQCNGYNDCDDWSDEAHCNCSENLFHCHTGKCLNYSLVCDGYDDCGDLSDEQ
 NDCNPTTEHRC GDGRCIAMEWVCDGDHDCVDKSDEVNCSCHSQGLVECRNGQ
 CIPSTFQCDGDEDCKDGSDEENC SVIQTSCQEGDQRCLYNPCLDSCGGSSLCDPN
 NSLNCSQCEPITLELCMNLPYNSTSYPNYFGHRTQKEASISWE SSLFPALVQTNC
 YKYLMMFFSCTILVPKCDVNTGEHIPPCRALCEHSKERCESVLGIVGLQWPEDTDCSQ
 F PEENSDNQTCLMPDEYVEECSPSHFKCRSGQCVLASRRCDGQADCDSDSDEEN
 CGCKERDLWECPSNKQC LKHTVICDGFDPDYMDEKNCSFCQDDELECANHAC
 VSRDLWCDGEADCSDSSDEWDCVTLSINVNSSS FLMVHRAATEHHVCADGWQEIL
 SQLACKQMGLGEPVTKLIQEKEPRWLTLSNWESLNGTTLHELLV NGQSCES
 RSKISLLCTKQDCGRRPAARMNKRILGGRTSRPGRWPWQCSLQSEPSGHICGCVLI
 AKKWVLT VAHCFEGRENAAVWKVVLGINNLDHPSVFMQTRFVKTIILHPRYSRAVV
 DYDISIVELSEISETGYVRP VCLPNPEQWLEPDTYCYITGWGHMGNKMPFKLQEG
 EVRIISLEHCQSYFDMKTITTRMICAGYESGTVDS
 CMGDSGGPLVCEKPGGRWTLFGLTSWGSVCFSKVLGPGVYSNVSYFVEWIKRQIYI
 QTFLNTRTRPLEQKLISEEDLAANDILDYKDDDDKV

| | |
|----------------------|---|
| Purity | > 80% as determined by SDS-PAGE and Coomassie blue staining. |
| Stability | Stable for 12 months from the date of receipt of the product under proper storage and handling conditions. Avoid repeated freeze-thaw cycles. |
| Storage | Store at -80 centigrade. |
| Concentration | >50 ug/mL as determined by microplate BCA method. |
| Preparation | Recombinant protein was captured through anti-DDK affinity column followed by conventional chromatography steps. |

 Tel: 1-631-559-9269 1-516-512-3133

 Email: info@creative-biomart.com  Fax: 1-631-938-8127

 45-1 Ramsey Road, Shirley, NY 11967, USA

Protein Families Druggable Genome, Protease, Transmembrane

Full Length Full L.

GENE INFORMATION

Gene Name CORIN corin, serine peptidase [Homo sapiens (human)]

Official Symbol CORIN

Synonyms CRN; ATC2; Lrp4; PEE5; TMPRSS10

Gene ID 10699

mRNA Refseq NM_006587.4

Protein Refseq NP_006578.2

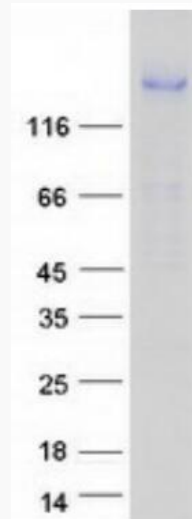
MIM 605236

UniProt ID Q9Y5Q5

 Tel: 1-631-559-9269 1-516-512-3133

 Email: info@creative-biomart.com  Fax: 1-631-938-8127

 45-1 Ramsey Road, Shirley, NY 11967, USA



Coomassie blue staining of purified CORIN protein.

 Tel: 1-631-559-9269 1-516-512-3133

 Email: info@creative-biomart.com  Fax: 1-631-938-8127

 45-1 Ramsey Road, Shirley, NY 11967, USA