

Recombinant Human CORIN Protein, Myc/DDK-tagged, C13 and N15-labeled

Cat. No. CORIN-5605H Lot. No. (See product label)

SPECIFICATION

Product Overview

CORIN MS Standard C13 and N15-labeled recombinant protein (NP_006578) with a C-terminal MYC/DDK tag, was expressed in HEK293 cells.

Species

Human

Source

HEK293

Description

This gene encodes a member of the type II transmembrane serine protease class of the trypsin superfamily. Members of this family are composed of multiple structurally distinct domains. The encoded protein converts pro-atrial natriuretic peptide to biologically active atrial natriuretic peptide, a cardiac hormone that regulates blood volume and pressure. This protein may also function as a pro-brain-type natriuretic peptide convertase. Multiple alternatively spliced transcript variants encoding different isoforms have been found for this gene.

Molecular Mass

116.3 kDa

AA Sequence

MKQSPALAPEERCRRAGSPKPVLRADDNNMGNGCSQKLATANLLRFLLLVLIPCICALVLLLVILLSYVGTLQKVYFKSNGSEPLVTDGEIQGSDVILTNTIYNQSTVVSTAHPDQHVPWTTDASLPGDQSHRNTSACMNITHSQCQMLPYHATLTPLLSVVRNMEMEKFLKFFTYLHRLSCYQHIMLFGCTLAFPECIIDGDDSHGLLPCRSFCEAAKEGCESVLGMVNYSWPDFLRCSQFRNQTESSNVSRI CFSPQQENKQLLCGRGENFLCASCIGIPGKLQCNGYND CDDWSDEAHCNCSENLFHCHTGKCLNYSLVCDGYDDCGDLSDEQN

 Tel: 1-631-559-9269 1-516-512-3133

 Email: info@creative-biomart.com  Fax: 1-631-938-8127

 45-1 Ramsey Road, Shirley, NY 11967, USA



CDCNPTTEHRCGDGRCIAMEWVCDGDHDCVDKSDEVNCSCHSQGLVECRNGQCI
 PSTFQCDGDEDCKDGSDEENC SVIQTSCQEGDQRCLYNPCLDSCGGSSLCDPNNS
 LNNCSQCEPITLELCMNLPYNSTSYPNYFGHRTQKEASISWESSLFPALVQTNCYKY
 LMFFSCTILVPKCDVNTGEHIPPCRALCEHSKERCESVLGIVGLQWPEDTDCSQFPE
 ENSDNQTCLMPDEYVEECSPSHFKCRSGQCVLASRRCDGQADCDDDSDEENCGC
 KERDLWECPSNKQCLKHTVICDGFPCPDYMDEKNCSFCQDDELECANHACVSRD
 LWCDGEADCSDSSDEWDCVTL SINVNSSSFLMVHRAATEHHVCADGWQEILSQLA
 CKQMGLGEP SVTKLIQEKEPRWLTLHSNWESLNGTTLHELLVNGQSCESRSKIS
 LLCTKQDCGRRPAARMNK RILGGRTSRPGRWPWQCSLQSEPSGHICGCVLIAKKW
 VLTVAHCFEGRENAAVWKVVLGINNLDHPSVFMQTRFVKTIILHPRYSRAVVYDISI
 VELSEDISETGYVRPVCLPNPEQWLEPDTYCYITGWGHMGNKMPFKLQEGEVRIISL
 EHCQSYFDMKTITTRMICAGYESGTVDSCMGDSGGPLVCEKPGGRWTLFGLTSWG
 SVCFSKVLGPGVYSNVSYFVEWIKRQIYIQTFLNTRTRPLEQKLISEEDLAANDILDY
 KDDDDKV

Purity > 80% as determined by SDS-PAGE and Coomassie blue staining

Stability Stable for 3 months from receipt of products under proper storage and handling conditions.

Storage Store at -80 centigrade. Avoid repeated freeze-thaw cycles.

Concentration 50 µg/mL as determined by BCA

Storage Buffer 100 mM glycine, 25 mM Tris-HCl, pH 7.3.

GENE INFORMATION

Gene Name CORIN corin, serine peptidase [Homo sapiens (human)]

Official Symbol CORIN

Tel: 1-631-559-9269 1-516-512-3133

Email: info@creative-biomart.com Fax: 1-631-938-8127

45-1 Ramsey Road, Shirley, NY 11967, USA

Synonyms CORIN; corin, serine peptidase; corin, serine protease; atrial natriuretic peptide-converting enzyme; ATC2; CRN; Lrp4; PRSC; TMPRSS10; pro-ANP-convertase; pro-ANP-converting enzyme; heart specific serine proteinase; transmembrane protease serine 10; heart-specific serine proteinase ATC2; atrial natriuretic peptide-converting enzyme; MGC119742;

Gene ID [10699](#)

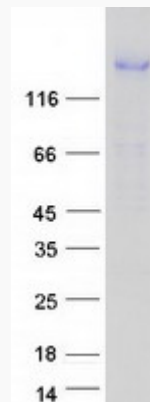
mRNA Refseq [NM_006587](#)

Protein Refseq [NP_006578](#)

MIM [605236](#)

UniProt ID [Q9Y5Q5](#)

SDS-PAGE



 Tel: 1-631-559-9269 1-516-512-3133

 Email: info@creative-biomart.com  Fax: 1-631-938-8127

 45-1 Ramsey Road, Shirley, NY 11967, USA