

# Recombinant Full Length Human CORO1A Protein, C-Flag-tagged

**Cat. No.** CORO1A-1487HFL    **Lot. No.** (See product label)

## SPECIFICATION

<b>Product Overview</b>	Recombinant Full Length Human CORO1A Protein, fused to Flag-tag at C-terminus, was expressed in Mammalian cells.
<b>Species</b>	Human
<b>Source</b>	Mammalian Cells
<b>Description</b>	This gene encodes a member of the WD repeat protein family. WD repeats are minimally conserved regions of approximately 40 amino acids typically bracketed by gly-his and trp-aspartic acid (GH-WD), which may facilitate formation of heterotrimeric or multiprotein complexes. Members of this family are involved in a variety of cellular processes, including cell cycle progression, signal transduction, apoptosis, and gene regulation. Alternative splicing results in multiple transcript variants. A related pseudogene has been defined on chromosome 16.
<b>Form</b>	25 mM Tris HCl, pH 7.3, 100 mM glycine, 10% glycerol.
<b>Molecular Mass</b>	50.8 kDa
<b>AA Sequence</b>	MSRQVVRSSKFRHVFGQPAKADQCYEDVRVSQTTWDSGFCAVNPKFVALICEASG GGAFVLVPLGKTGRV DKNAPTVCGHTAPVLDAWCPHNDNVIASGSEDCTVMVWEI PDGGLMLPLREPVTLEGHTKRVGIVAWH TTAQNVLLSAGCDNVIMVWDVGTGAA MLTLGPEVHPDTIYSVDWSRDGGLICTSCRDKRVRIIEPRKGTV VAEKDRPHEGTRP VRAVVFVSEGKILTTGFSRMSERQVALWDTKHLEEPLSLQELDTSSGVLLPFFDPDTN

 Tel: 1-631-559-9269    1-516-512-3133

 Email: [info@creative-biomart.com](mailto:info@creative-biomart.com)     Fax: 1-631-938-8127

 45-1 Ramsey Road, Shirley, NY 11967, USA



IVYLCGKGDSSIRYFEITSEAPFLHYLSMFSSKESQRGBMGYMPKRGLEVNKCEIARF  
 YKLHERRCEPIAM TVPRKSDLFQEDLYPPTAGPDPALTAEEWLGGRDAGPLLISLKD  
 GYVPPKSREL RVNRGLDTGRRRAAPE  
 ASGTPSSDAVSRLEEEMRKLQATVQELQKRLDRLEETVQAKTRTRPLEQKLISEEDL  
 AANDILDYKDDDDKV

<b>Purity</b>	> 80% as determined by SDS-PAGE and Coomassie blue staining.
<b>Stability</b>	Stable for 12 months from the date of receipt of the product under proper storage and handling conditions. Avoid repeated freeze-thaw cycles.
<b>Storage</b>	Store at -80 centigrade.
<b>Concentration</b>	>50 ug/mL as determined by microplate BCA method.
<b>Preparation</b>	Recombinant protein was captured through anti-DDK affinity column followed by conventional chromatography steps.
<b>Full Length</b>	Full L.

## GENE INFORMATION

<b>Gene Name</b>	CORO1A coronin 1A [ Homo sapiens (human) ]
<b>Official Symbol</b>	CORO1A
<b>Synonyms</b>	p57; IMD8; TACO; CLABP; HCORO1; CLIPINA
<b>Gene ID</b>	11151
<b>mRNA Refseq</b>	NM_007074.4

Tel: 1-631-559-9269 1-516-512-3133

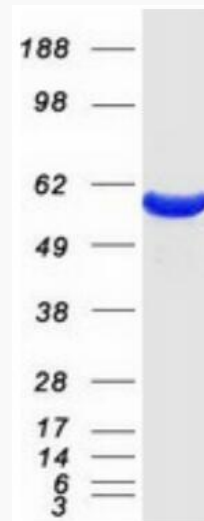
Email: [info@creative-biomart.com](mailto:info@creative-biomart.com) Fax: 1-631-938-8127

45-1 Ramsey Road, Shirley, NY 11967, USA

Protein Refseq NP\_009005.1

MIM 605000

UniProt ID P31146



Coomassie blue staining of purified CORO1A protein.

Tel: 1-631-559-9269 1-516-512-3133

Email: [info@creative-biomart.com](mailto:info@creative-biomart.com) Fax: 1-631-938-8127

45-1 Ramsey Road, Shirley, NY 11967, USA