

Recombinant Human CORO1A Protein, GST-tagged

Cat. No. CORO1A-1723H Lot. No. (See product label)

SPECIFICATION

Product Overview	Human CORO1A partial ORF (NP_009005, 360 a.a. - 461 a.a.) recombinant protein with GST-tag at N-terminal.
Species	Human
Source	Wheat Germ
Description	<p>This gene encodes a member of the WD repeat protein family. WD repeats are minimally conserved regions of approximately 40 amino acids typically bracketed by gly-his and trp-asp (GH-WD), which may facilitate formation of heterotrimeric or multiprotein complexes. Members of this family are involved in a variety of cellular processes, including cell cycle progression, signal transduction, apoptosis, and gene regulation. Alternative splicing results in multiple transcript variants. A related pseudogene has been defined on chromosome 16. [provided by RefSeq, Sep 2010]</p>
Molecular Mass	36.96 kDa
AA Sequence	QEDLYPPTAGPDPALTAEEWLGGRDAGPLLISLKDGYVPPKSRELRVNRLDGTGRR RAAPEASGTPSSDAVSRLEEEMRKLQATVQELQKRLDRLEETVQAK
Applications	Enzyme-linked Immunoabsorbent Assay Western Blot (Recombinant protein) Antibody Production Protein Array

 Tel: 1-631-559-9269 1-516-512-3133

 Email: info@creative-biomart.com  Fax: 1-631-938-8127

 45-1 Ramsey Road, Shirley, NY 11967, USA

Notes	Best use within three months from the date of receipt of this protein.
Storage	Store at -80 centigrade. Aliquot to avoid repeated freezing and thawing.
Storage Buffer	50 mM Tris-HCl, 10 mM reduced Glutathione, pH=8.0 in the elution buffer.

GENE INFORMATION

Gene Name	CORO1A coronin, actin binding protein, 1A [Homo sapiens]
Official Symbol	CORO1A
Synonyms	CORO1A; coronin, actin binding protein, 1A; coronin-1A; Clabp TACO; coronin 1; HCORO1; p57; clipin-A; coronin-1; coronin-like protein A; coronin-like protein p57; tryptophan aspartate-containing coat protein; TACO; CLABP; CLIPINA; FLJ41407; MGC117380;
Gene ID	11151
mRNA Refseq	NM_001193333
Protein Refseq	NP_001180262
MIM	605000
UniProt ID	P31146

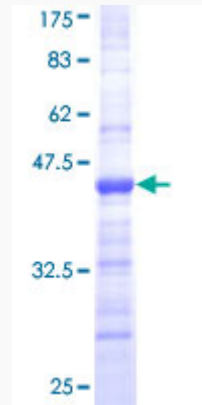
 Tel: 1-631-559-9269 1-516-512-3133

 Email: info@creative-biomart.com  Fax: 1-631-938-8127

 45-1 Ramsey Road, Shirley, NY 11967, USA

Quality Control

Testing:



12.5% SDS-PAGE Stained with Coomassie Blue.

 Tel: 1-631-559-9269 1-516-512-3133

 Email: info@creative-biomart.com  Fax: 1-631-938-8127

 45-1 Ramsey Road, Shirley, NY 11967, USA