

## Recombinant Human CORT Protein, GST-tagged

Cat. No. CORT-1729H Lot. No. (See product label)

### SPECIFICATION

<b>Product Overview</b>	Human CORT full-length ORF ( NP_001293.2, 1 a.a. - 155 a.a.) recombinant protein with GST-tag at N-terminal.
<b>Species</b>	Human
<b>Source</b>	Wheat Germ
<b>Description</b>	This gene encodes a neuropeptide that is structurally similar to somatostatin. It binds to all known somatostatin receptors, and shares many pharmacological and functional properties with somatostatin, including the depression of neuronal activity. However, it also has many properties distinct from somatostatin, such as induction of slow-wave sleep, apparently by antagonism of the excitatory effects of acetylcholine on the cortex, reduction of locomotor activity, and activation of cation selective currents not responsive to somatostatin. The preproprotein undergoes further processing into multiple mature products. Read-through transcripts exist between this gene and the upstream APITD1 (apoptosis-inducing, TAF9-like domain 1) gene, as represented in GeneID:100526739. [provided by RefSeq, Nov 2010]
<b>Molecular Mass</b>	43.6 kDa
<b>AA Sequence</b>	MYRHKNSWRLGLKYPPSSKEETQVPKTLISGLPGRKSSSRVGEKLQSAHKMPLSPG LLLLLLSGATATAALPLEGGPTGRDSEHMQEAAAGIRKSSLLTFLAWWFEWTSQASA GPLIGEEAREVARRQEGAPPQQSARRDRMPCRNFFWKTFSSCK
<b>Applications</b>	Enzyme-linked Immunoabsorbent Assay

 Tel: 1-631-559-9269 1-516-512-3133

 Email: [info@creative-biomart.com](mailto:info@creative-biomart.com)  Fax: 1-631-938-8127

 45-1 Ramsey Road, Shirley, NY 11967, USA

Western Blot (Recombinant protein)  
 Antibody Production  
 Protein Array

<b>Notes</b>	Best use within three months from the date of receipt of this protein.
<b>Storage</b>	Store at -80 centigrade. Aliquot to avoid repeated freezing and thawing.
<b>Storage Buffer</b>	50 mM Tris-HCl, 10 mM reduced Glutathione, pH=8.0 in the elution buffer.

## GENE INFORMATION

<b>Gene Name</b>	CORT cortistatin [ Homo sapiens (human) ]
<b>Official Symbol</b>	CORT
<b>Synonyms</b>	CORT; cortistatin; Cortistatin; Prepro-Cortistatin; Preprocortistatin; Cortistatin-14; Cortistatin-17; Cortistatin-29; CST-14; CST-17; CST-29; cortistatin; cortistatin-14; cortistatin-17; cortistatin-29; prepro-cortistatin; preprocortistatin
<b>Gene ID</b>	1325
<b>mRNA Refseq</b>	NM_001302
<b>Protein Refseq</b>	NP_001293
<b>MIM</b>	602784
<b>UniProt ID</b>	O00230

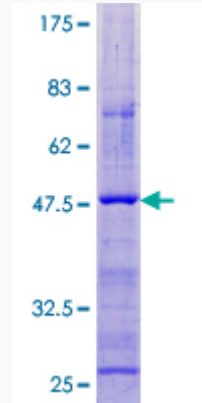
 Tel: 1-631-559-9269 1-516-512-3133

 Email: [info@creative-biomart.com](mailto:info@creative-biomart.com)  Fax: 1-631-938-8127

 45-1 Ramsey Road, Shirley, NY 11967, USA

**Quality Control**

**Testing:**



12.5% SDS-PAGE Stained with Coomassie Blue.

 Tel: 1-631-559-9269 1-516-512-3133

 Email: [info@creative-biomart.com](mailto:info@creative-biomart.com)  Fax: 1-631-938-8127

 45-1 Ramsey Road, Shirley, NY 11967, USA