

Recombinant Human COX11 Protein, GST-tagged

Cat. No. COX11-1734H Lot. No. (See product label)

SPECIFICATION

Product Overview	Human COX11 full-length ORF (NP_004366.1, 1 a.a. - 276 a.a.) recombinant protein with GST-tag at N-terminal.
Species	Human
Source	Wheat Germ
Description	<p>Cytochrome c oxidase (COX), the terminal component of the mitochondrial respiratory chain, catalyzes the electron transfer from reduced cytochrome c to oxygen. This component is a heteromeric complex consisting of 3 catalytic subunits encoded by mitochondrial genes and multiple structural subunits encoded by nuclear genes. The mitochondrially-encoded subunits function in electron transfer, and the nuclear-encoded subunits may function in the regulation and assembly of the complex. This nuclear gene encodes a protein which is not a structural subunit, but may be a heme A biosynthetic enzyme involved in COX formation, according to the yeast mutant studies. However, the studies in <i>Rhodobacter sphaeroides</i> suggest that this gene is not required for heme A biosynthesis, but required for stable formation of the Cu(B) and magnesium centers of COX. This human protein is predicted to contain a transmembrane domain localized in the mitochondrial inner membrane. Multiple transcript variants encoding different isoforms have been found for this gene. A related pseudogene has been found on chromosome 6. [provided by RefSeq, Jun 2009]</p>
Molecular Mass	57.8 kDa

 Tel: 1-631-559-9269 1-516-512-3133

 Email: info@creative-biomart.com  Fax: 1-631-938-8127

 45-1 Ramsey Road, Shirley, NY 11967, USA

AA Sequence	MGGLWRPGWRCVPFCGWRWIHPGSPTRAAERVEPFLRPEWSGTGGAERGLRWL GTWKRCSLRARHPALQPPRRPKSSNPFTRAQEEERRRQNKTTLTLYVA AVAVGMLG ASYAAVPLYRLYCQTTGLGGS AVAGHASDKIENMVPVKDRIIKISFNADVHASLQWN FRPQQTEIYVVPGETALAFYRAKNPTDKPVIGISTYNIVPFEAGQYFNKIQCFCFEEQ RLNPQEEVDMPVFFYIDPEFAEDPRMIKVDLITLSYTFEAKEG HKLPVPGYN
Applications	Enzyme-linked Immunoabsorbent Assay Western Blot (Recombinant protein) Antibody Production Protein Array
Notes	Best use within three months from the date of receipt of this protein.
Storage	Store at -80 centigrade. Aliquot to avoid repeated freezing and thawing.
Storage Buffer	50 mM Tris-HCl, 10 mM reduced Glutathione, pH=8.0 in the elution buffer.
GENE INFORMATION	
Gene Name	COX11 COX11 cytochrome c oxidase assembly homolog (yeast) [Homo sapiens]
Official Symbol	COX11
Synonyms	COX11; COX11 cytochrome c oxidase assembly homolog (yeast); COX11 (yeast) homolog, cytochrome c oxidase assembly protein; cytochrome c oxidase assembly protein COX11, mitochondrial; COX11P; cytochrome c oxidase assembly protein COX11; cytochrome c oxidase subunit 11; COX11 homolog, cytochrome c oxidase assembly protein;
Gene ID	1353

 Tel: 1-631-559-9269 1-516-512-3133

 Email: info@creative-biomart.com  Fax: 1-631-938-8127

 45-1 Ramsey Road, Shirley, NY 11967, USA

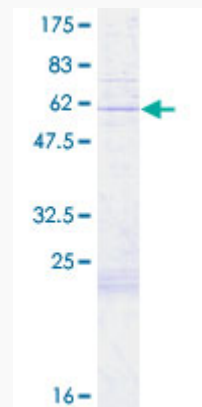
mRNA Refseq [NM_001162861](#)

Protein Refseq [NP_001156333](#)

MIM [603648](#)

UniProt ID [Q9Y6N1](#)

**Quality Control
Testing:**



12.5% SDS-PAGE Stained with Coomassie Blue.

 Tel: 1-631-559-9269 1-516-512-3133

 Email: info@creative-biomart.com  Fax: 1-631-938-8127

 45-1 Ramsey Road, Shirley, NY 11967, USA