

## Recombinant Human COX17 Protein, GST-tagged

Cat. No. COX17-1738H Lot. No. (See product label)

### SPECIFICATION

**Product Overview** Human COX17 full-length ORF ( NP\_005685.1, 1 a.a. - 63 a.a.) recombinant protein with GST-tag at N-terminal.

**Species** Human

**Source** Wheat Germ

**Description** Cytochrome c oxidase (COX), the terminal component of the mitochondrial respiratory chain, catalyzes the electron transfer from reduced cytochrome c to oxygen. This component is a heteromeric complex consisting of 3 catalytic subunits encoded by mitochondrial genes and multiple structural subunits encoded by nuclear genes. The mitochondrially-encoded subunits function in electron transfer, and the nuclear-encoded subunits may function in the regulation and assembly of the complex. This nuclear gene encodes a protein which is not a structural subunit, but may be involved in the recruitment of copper to mitochondria for incorporation into the COX apoenzyme. This protein shares 92% amino acid sequence identity with mouse and rat Cox17 proteins. This gene is no longer considered to be a candidate gene for COX deficiency. A pseudogene COX17P has been found on chromosome 13. [provided by RefSeq, Jul 2008]

**Molecular Mass** 33.3 kDa

**AA Sequence** MPGLVDSNPAPPESQEKKPLKPCACPETKKARDACIIEKGEEHCGHLIEAHKECMR  
ALGFKI

 Tel: 1-631-559-9269 1-516-512-3133

 Email: [info@creative-biomart.com](mailto:info@creative-biomart.com)  Fax: 1-631-938-8127

 45-1 Ramsey Road, Shirley, NY 11967, USA



<b>Applications</b>	Enzyme-linked Immunoabsorbent Assay Western Blot (Recombinant protein) Antibody Production Protein Array
<b>Notes</b>	Best use within three months from the date of receipt of this protein.
<b>Storage</b>	Store at -80 centigrade. Aliquot to avoid repeated freezing and thawing.
<b>Storage Buffer</b>	50 mM Tris-HCl, 10 mM reduced Glutathione, pH=8.0 in the elution buffer.

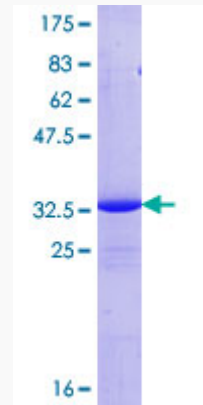
## GENE INFORMATION

<b>Gene Name</b>	COX17 COX17 cytochrome c oxidase assembly homolog (S. cerevisiae) [ Homo sapiens ]
<b>Official Symbol</b>	COX17
<b>Synonyms</b>	COX17; COX17 cytochrome c oxidase assembly homolog (S. cerevisiae); COX17 (yeast) homolog, cytochrome c oxidase assembly protein , COX17 homolog, cytochrome c oxidase assembly protein (S. cerevisiae) , COX17 homolog, cytochrome c oxidase assembly protein (yeast); cytochrome c oxidase copper chaperone; human homolog of yeast mitochondrial copper recruitment; MGC104397; MGC117386;
<b>Gene ID</b>	10063
<b>mRNA Refseq</b>	NM_005694
<b>Protein Refseq</b>	NP_005685

**MIM** 604813

**UniProt ID** Q14061

**Quality Control  
Testing:**



12.5% SDS-PAGE Stained with Coomassie Blue.

 Tel: 1-631-559-9269 1-516-512-3133

 Email: [info@creative-biomart.com](mailto:info@creative-biomart.com)  Fax: 1-631-938-8127

 45-1 Ramsey Road, Shirley, NY 11967, USA