

Recombinant Human COX18 Protein, GST-tagged

Cat. No. COX18-1740H Lot. No. (See product label)

SPECIFICATION

Product Overview	Human COX18 full-length ORF (NP_776188.1, 1 a.a. - 333 a.a.) recombinant protein with GST-tag at N-terminal.
Species	Human
Source	Wheat Germ
Description	This gene encodes a cytochrome c oxidase assembly protein. The encoded protein is essential for integral membrane protein insertion into the mitochondrial inner membrane. It is also required for cytochrome c oxidase assembly and activity. Alternative splicing results in multiple transcript variants. [provided by RefSeq, Jul 2014]
Molecular Mass	63.5 kDa
AA Sequence	MLCRLGGRWLRPLPALQLWARDLPLAPVPTSGAKRPTLPVWAVAPVSAVHANGWY EALAASSPVRVAEEVLLGVHAATGLPWWGSILLSTVALRGAVTLPLAAYQHYILAKVE NLQPEIKTIARHLNQEVAVRANQLGWSKRDARLTYLKNMRRLISELYVRDNCHPFKA TVLVWIQLPMWIFMSFALRNLSTGAAHSEGFSVQEQLATGGILWFPDLTAPDSTWIL PISVGVINLLIVEICALQKIGMSRFQTYITYFVRAMSVLMIPIAATVPSSIVLYWLCSSFV GLSQNLLLRSPGFRQLCRIPSTKSDSETPYKDIFAAFNTKFISRK
Applications	Enzyme-linked Immunoabsorbent Assay Western Blot (Recombinant protein) Antibody Production

 Tel: 1-631-559-9269 1-516-512-3133

 Email: info@creative-biomart.com  Fax: 1-631-938-8127

 45-1 Ramsey Road, Shirley, NY 11967, USA

Protein Array

Notes	Best use within three months from the date of receipt of this protein.
Storage	Store at -80 centigrade. Aliquot to avoid repeated freezing and thawing.
Storage Buffer	50 mM Tris-HCl, 10 mM reduced Glutathione, pH=8.0 in the elution buffer.

GENE INFORMATION

Gene Name	COX18 COX18 cytochrome c oxidase assembly homolog (<i>S. cerevisiae</i>) [<i>Homo sapiens</i>]
Official Symbol	COX18
Synonyms	COX18; COX18 cytochrome c oxidase assembly homolog (<i>S. cerevisiae</i>); mitochondrial inner membrane protein COX18; FLJ38991; Cox18Hs1 protein; Cox18Hs2 protein; Cox18Hs3 protein; mitochondrial COX18; cytochrome c oxidase assembly protein 18; COX18HS; MGC126733;
Gene ID	285521
mRNA Refseq	NM_173827
Protein Refseq	NP_776188
MIM	610428
UniProt ID	Q8N8Q8

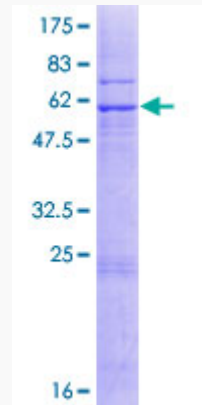
 Tel: 1-631-559-9269 1-516-512-3133

 Email: info@creative-biomart.com  Fax: 1-631-938-8127

 45-1 Ramsey Road, Shirley, NY 11967, USA

Quality Control

Testing:



12.5% SDS-PAGE Stained with Coomassie Blue.

 Tel: 1-631-559-9269 1-516-512-3133

 Email: info@creative-biomart.com  Fax: 1-631-938-8127

 45-1 Ramsey Road, Shirley, NY 11967, USA