

## Recombinant Human COX5B Protein, GST-tagged

**Cat. No.** COX5B-1751H    **Lot. No.** (See product label)

### SPECIFICATION

<b>Product Overview</b>	Human COX5B full-length ORF ( AAH06229.1, 1 a.a. - 129 a.a.) recombinant protein with GST-tag at N-terminal.
<b>Species</b>	Human
<b>Source</b>	Wheat Germ
<b>Description</b>	Cytochrome C oxidase (COX) is the terminal enzyme of the mitochondrial respiratory chain. It is a multi-subunit enzyme complex that couples the transfer of electrons from cytochrome c to molecular oxygen and contributes to a proton electrochemical gradient across the inner mitochondrial membrane. The complex consists of 13 mitochondrial- and nuclear-encoded subunits. The mitochondrially-encoded subunits perform the electron transfer and proton pumping activities. The functions of the nuclear-encoded subunits are unknown but they may play a role in the regulation and assembly of the complex. This gene encodes the nuclear-encoded subunit Vb of the human mitochondrial respiratory chain enzyme. [provided by RefSeq, Jul 2008]
<b>Molecular Mass</b>	39.82 kDa
<b>AA Sequence</b>	MASRLLRGAGTLAAQALRARGPSGAAAMRSMASGGGVPTDEEQATGLEREIMLAA KKGLDPYINVLPKLGASGTREDPNLVPSISNKRIVGCICEEDNTSVVFWLHKGEAQ RCPRCGAHYKLVPPQLAH
<b>Applications</b>	Enzyme-linked Immunoabsorbent Assay Western Blot (Recombinant protein)

 Tel: 1-631-559-9269    1-516-512-3133

 Email: [info@creative-biomart.com](mailto:info@creative-biomart.com)     Fax: 1-631-938-8127

 45-1 Ramsey Road, Shirley, NY 11967, USA



	Antibody Production Protein Array
<b>Notes</b>	Best use within three months from the date of receipt of this protein.
<b>Storage</b>	Store at -80 centigrade. Aliquot to avoid repeated freezing and thawing.
<b>Storage Buffer</b>	50 mM Tris-HCl, 10 mM reduced Glutathione, pH=8.0 in the elution buffer.
<b>GENE INFORMATION</b>	
<b>Gene Name</b>	COX5B cytochrome c oxidase subunit Vb [ Homo sapiens ]
<b>Official Symbol</b>	COX5B
<b>Synonyms</b>	COX5B; cytochrome c oxidase subunit Vb; cytochrome c oxidase subunit 5B, mitochondrial; cytochrome c oxidase polypeptide VB, mitochondrial; COXVB;
<b>Gene ID</b>	1329
<b>mRNA Refseq</b>	NM_001862
<b>Protein Refseq</b>	NP_001853
<b>MIM</b>	123866
<b>UniProt ID</b>	P10606

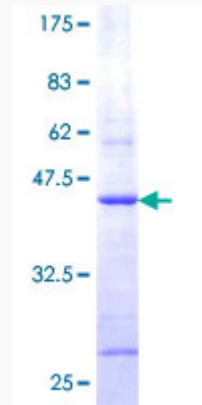
Tel: 1-631-559-9269 1-516-512-3133

Email: [info@creative-biomart.com](mailto:info@creative-biomart.com) Fax: 1-631-938-8127

45-1 Ramsey Road, Shirley, NY 11967, USA

**Quality Control**

**Testing:**



12.5% SDS-PAGE Stained with Coomassie Blue.

 Tel: 1-631-559-9269 1-516-512-3133

 Email: [info@creative-biomart.com](mailto:info@creative-biomart.com)  Fax: 1-631-938-8127

 45-1 Ramsey Road, Shirley, NY 11967, USA