

Recombinant Human COX6B2 Protein, GST-tagged

Cat. No. COX6B2-1756H Lot. No. (See product label)

SPECIFICATION

Product Overview	Human COX6B2 full-length ORF (NP_653214.2, 1 a.a. - 88 a.a.) recombinant protein with GST-tag at N-terminal.
Species	Human
Source	Wheat Germ
Description	COX6B2 (Cytochrome C Oxidase Subunit 6B2) is a Protein Coding gene. Among its related pathways are Respiratory electron transport, ATP synthesis by chemiosmotic coupling, and heat production by uncoupling proteins. and AMPK Enzyme Complex Pathway. GO annotations related to this gene include cytochrome-c oxidase activity. An important paralog of this gene is COX6B1.
Molecular Mass	36.9 kDa
AA Sequence	MLDVEAQEPPKGGKWSTPPFDPRFPSQNRNCYQNFLDYHRCLKTRTRRGKSTQP CEYYFRVYHSLCPISWVESWNEQIKNGIFAGKI
Applications	Enzyme-linked Immunoabsorbent Assay Western Blot (Recombinant protein) Antibody Production Protein Array
Notes	Best use within three months from the date of receipt of this protein.

 Tel: 1-631-559-9269 1-516-512-3133

 Email: info@creative-biomart.com  Fax: 1-631-938-8127

 45-1 Ramsey Road, Shirley, NY 11967, USA

Storage	Store at -80 centigrade. Aliquot to avoid repeated freezing and thawing.
Storage Buffer	50 mM Tris-HCl, 10 mM reduced Glutathione, pH=8.0 in the elution buffer.
GENE INFORMATION	
Gene Name	COX6B2 cytochrome c oxidase subunit VIb polypeptide 2 (testis) [Homo sapiens]
Official Symbol	COX6B2
Synonyms	COX6B2; cytochrome c oxidase subunit VIb polypeptide 2 (testis); cytochrome c oxidase subunit 6B2; cancer/testis antigen 59; COXVIB2; CT59; cytochrome c oxidase subunit VIb; testes specific; FLJ32865; COX VIb-2; cytochrome c oxidase subunit VIb, testes specific; cytochrome c oxidase subunit VIb, testes-specific; cytochrome c oxidase subunit VIb, testis-specific isoform; FLJ46422; MGC119094;
Gene ID	125965
mRNA Refseq	NM_144613
Protein Refseq	NP_653214
UniProt ID	Q6YFQ2

 Tel: 1-631-559-9269 1-516-512-3133

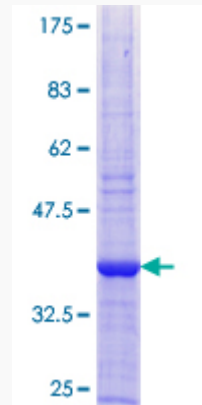
 Email: info@creative-biomart.com  Fax: 1-631-938-8127

 45-1 Ramsey Road, Shirley, NY 11967, USA



Quality Control

Testing:



12.5% SDS-PAGE Stained with Coomassie Blue.

Tel: 1-631-559-9269 1-516-512-3133

Email: info@creative-biomart.com Fax: 1-631-938-8127

45-1 Ramsey Road, Shirley, NY 11967, USA