

Recombinant Human CP protein(731-1060 aa), C-His-tagged

Cat. No. CP-2496H Lot. No. (See product label)

SPECIFICATION

Product Overview	Recombinant Human CP protein(P00450)(731-1060 aa), fused with C-terminal His tag, was expressed in E. coli.
Species	Human
Source	E.coli
ProteinLength	731-1060 aa
Form	0.15 M Phosphate buffered saline
Molecular Mass	41 kDaa
Storage	Shipped on dry ice. Avoid repeated freeze-thaw cycles. Upon receipt, 2 days when stored at 2 to 8 °C after thawing. Up to 12 months when aliquoted and stored at -20 to -80°C.
Reconstitution	It is recommended that sterile water be added to the vial to prepare a stock solution of 0.2 ug/ul. Centrifuge the vial at 4°C before opening to recover the entire contents.
AA Sequence	ERTYYIAAVEVEWDYSPQREWEKELHHLQEQNVSNAFLDKGEFYIGSKYKKVVYRQ YTDSTFRVPVERKAE EHLGILGPQLHADVGDKVKIIFKNMATRPYSIHAHGVQTESS TVTPTLPGETLTYVWKIPERSGAGTEDSACIPWAYYSTVDQVKDLYSGLIGPLIVCRR PYLKVFNPRRKLEFALLFLVFDENESWYLDNIIKTYSDHPEKVNKDDEEFIESNKM HINGRMFGNLQGLTMHVGDEVNWYLMGMGNEIDLHTVHFHGHFSFYKHRGVYSS

 Tel: 1-631-559-9269 1-516-512-3133

 Email: info@creative-biomart.com  Fax: 1-631-938-8127

 45-1 Ramsey Road, Shirley, NY 11967, USA



DVFDIFPGTYQTLEMFPRTPGIWLLHCHVTDHIHAGMETTYTVLQNE

GENE INFORMATION

Gene Name	CP ceruloplasmin (ferroxidase) [Homo sapiens]
Official Symbol	CP
Synonyms	CP; ceruloplasmin (ferroxidase); ceruloplasmin; CP-2;
Gene ID	1356
mRNA Refseq	NM_000096
Protein Refseq	NP_000087
MIM	117700
UniProt ID	P00450

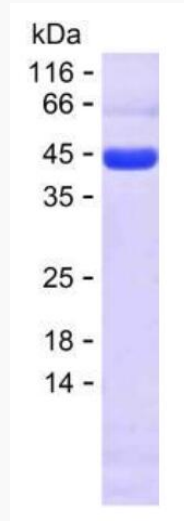
 Tel: 1-631-559-9269 1-516-512-3133

 Email: info@creative-biomart.com  Fax: 1-631-938-8127

 45-1 Ramsey Road, Shirley, NY 11967, USA



SDS-PAGE



Tel: 1-631-559-9269 1-516-512-3133

Email: info@creative-biomart.com Fax: 1-631-938-8127

45-1 Ramsey Road, Shirley, NY 11967, USA