

## Recombinant Human CPA1 Protein (Lys17-Tyr419), C-His tagged

Cat. No. CPA1-1055H    Lot. No. (See product label)

### SPECIFICATION

<b>Product Overview</b>	Recombinant human CPA1 (Lys17-Tyr419) fused with the C-terminal His tag was expressed in Mammalian cells.
<b>Species</b>	Human
<b>Source</b>	Mammalian Cells
<b>ProteinLength</b>	Lys17-Tyr419
<b>Form</b>	Lyophilized powder/frozen liquid
<b>Molecular Mass</b>	44.33 kDa
<b>Purity</b>	>90% as determined by SDS-PAGE.
<b>Notes</b>	For research use only.
<b>Storage</b>	Use a manual defrost freezer and avoid repeated freeze thaw cycles. Store at 2 to 8 centigrade for one week. Store at -20 to -80 centigrade for twelve months from the date of receipt.
<b>Storage Buffer</b>	Supplied as solution form in PBS or lyophilized from PBS.
<b>Reconstitution</b>	Reconstitute in sterile water for a stock solution.

 Tel: 1-631-559-9269    1-516-512-3133

 Email: [info@creative-biomart.com](mailto:info@creative-biomart.com)     Fax: 1-631-938-8127

 45-1 Ramsey Road, Shirley, NY 11967, USA

**Shipping**

They are shipped out with dry ice/blue ice unless customers require otherwise.

**GENE INFORMATION****Gene Name**

CPA1 carboxypeptidase A1 (pancreatic) [ Homo sapiens (human) ]

**Official Symbol**

CPA1

**Synonyms**

CPA1; carboxypeptidase A1 (pancreatic); CPA; carboxypeptidase A1; pancreatic carboxypeptidase A;

**Gene ID**

1357

**mRNA Refseq**

NM\_001868

**Protein Refseq**

NP\_001859

**MIM**

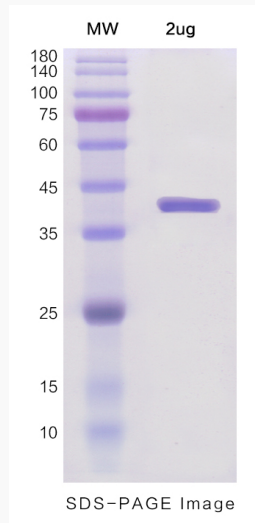
114850

**UniProt ID**

P15085

 Tel: 1-631-559-9269 1-516-512-3133 Email: [info@creative-biomart.com](mailto:info@creative-biomart.com)  Fax: 1-631-938-8127 45-1 Ramsey Road, Shirley, NY 11967, USA

**SDS-PAGE**



 Tel: 1-631-559-9269 1-516-512-3133

 Email: [info@creative-biomart.com](mailto:info@creative-biomart.com)  Fax: 1-631-938-8127

 45-1 Ramsey Road, Shirley, NY 11967, USA