

Active Recombinant Human CPA1 protein, His-tagged

Cat. No. CPA1-3176H Lot. No. (See product label)

SPECIFICATION

Product Overview	Active Recombinant Human CPA1 protein(NP_001859.1) (Met 1-Tyr 419) was expressed in HEK293 with a C-terminal polyhistidine tag.
Species	Human
Source	HEK293
ProteinLength	1-419 aa
Form	Lyophilized from sterile PBS, pH 7.4.
Bio-activity	Measured by its ability to cleave the colorimetric peptide substrate Ac-Phe-Thiaphe-OH in the presence of 5,5'Dithiobis (2-nitrobenzoic acid) (DTNB). The specific activity is >3,500 pmoles/min/μg.
Molecular Mass	The secreted recombinant human CPA1 (pro form) consists of 414 amino acids and has a predicted molecular mass of 47 kDa. In SDS-PAGE under reducing conditions, it migrates with the apparent molecular mass of 43 kDa.
Endotoxin	< 1.0 EU per μg protein as determined by the LAL method.
Purity	> 97 % as determined by SDS-PAGE
Storage	Store it under sterile conditions at -20°C to -80°C upon receiving. Recommend to aliquot the protein into smaller quantities for optimal storage. Avoid repeated freeze-

 Tel: 1-631-559-9269 1-516-512-3133

 Email: info@creative-biomart.com  Fax: 1-631-938-8127

 45-1 Ramsey Road, Shirley, NY 11967, USA

thaw cycles.

Reconstitution

It is recommended that sterile water be added to the vial to prepare a stock solution of 0.2 ug/ul. Centrifuge the vial at 4°C before opening to recover the entire contents.

GENE INFORMATION

Gene Name CPA1 carboxypeptidase A1 (pancreatic) [Homo sapiens]

Official Symbol CPA1

Synonyms CPA1; carboxypeptidase A1 (pancreatic); CPA; carboxypeptidase A1; pancreatic carboxypeptidase A;

Gene ID 1357

mRNA Refseq NM_001868

Protein Refseq NP_001859

MIM 114850

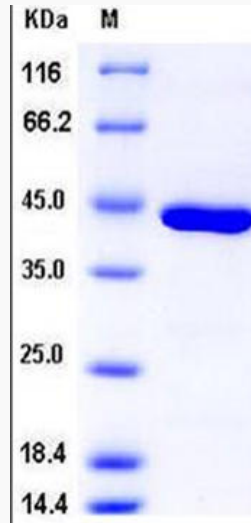
UniProt ID P15085

 Tel: 1-631-559-9269 1-516-512-3133

 Email: info@creative-biomart.com  Fax: 1-631-938-8127

 45-1 Ramsey Road, Shirley, NY 11967, USA

SDS-PAGE



 Tel: 1-631-559-9269 1-516-512-3133

 Email: info@creative-biomart.com  Fax: 1-631-938-8127

 45-1 Ramsey Road, Shirley, NY 11967, USA