

## Recombinant Human CPA2 Protein, GST-tagged

Cat. No. CPA2-1770H Lot. No. (See product label)

### SPECIFICATION

<b>Product Overview</b>	Human CPA2 full-length ORF ( AAH14571.1, 1 a.a. - 417 a.a.) recombinant protein with GST-tag at N-terminal.
<b>Species</b>	Human
<b>Source</b>	Wheat Germ
<b>Description</b>	Three different forms of human pancreatic procarboxypeptidase A have been isolated. The encoded protein represents the A2 form, which is a monomeric protein with different biochemical properties from the A1 and A3 forms. The A2 form of pancreatic procarboxypeptidase acts on aromatic C-terminal residues and is a secreted protein. [provided by RefSeq, Dec 2008]
<b>Molecular Mass</b>	73.2 kDa
<b>AA Sequence</b>	MRLILFFGALFGHIYCLETFVGDVLEIVPSNEEQIKNLLQLEAQEHLQLDFWKSPTTP GETAHVRVVPFVNVQAVKVFLESQGIAYSIMIEDVQVLLDKENEEMLFNRRRERSGNF NFGAYHTLEEISQEMDNLVAEHPGLVSKVNIGSSFENRPMNVLKFSTGGDKPAIWL AGIHAREWVTQATALWTANKIVSDYGKDPISILDALDIFLLPVTNPDGYVFSQTKN RMWRKTRSKVSGSLCVGDPNRNWDAGFGGPGASSNPCSDSYHGPSANSEVEV KSIVDFIKSHGKVKAFITLHSYSQLLMFPYGYKCTKLDDFDELSEVAQKAAQSLRSLH GTKYKVGPICSVIYQASGGSIDWSYDYGKYSFAFELRDTGRYGFLLPARQILPTAEE TWLGLKAIMEHVRDHPY
<b>Applications</b>	Enzyme-linked Immunoabsorbent Assay

 Tel: 1-631-559-9269 1-516-512-3133

 Email: [info@creative-biomart.com](mailto:info@creative-biomart.com)  Fax: 1-631-938-8127

 45-1 Ramsey Road, Shirley, NY 11967, USA

Western Blot (Recombinant protein)  
 Antibody Production  
 Protein Array

<b>Notes</b>	Best use within three months from the date of receipt of this protein.
<b>Storage</b>	Store at -80 centigrade. Aliquot to avoid repeated freezing and thawing.
<b>Storage Buffer</b>	50 mM Tris-HCl, 10 mM reduced Glutathione, pH=8.0 in the elution buffer.

## GENE INFORMATION

<b>Gene Name</b>	<a href="#">CPA2 carboxypeptidase A2 (pancreatic) [ Homo sapiens ]</a>
<b>Official Symbol</b>	<a href="#">CPA2</a>
<b>Synonyms</b>	CPA2; carboxypeptidase A2 (pancreatic); carboxypeptidase A2;
<b>Gene ID</b>	<a href="#">1358</a>
<b>mRNA Refseq</b>	<a href="#">NM_001869</a>
<b>Protein Refseq</b>	<a href="#">NP_001860</a>
<b>MIM</b>	<a href="#">600688</a>
<b>UniProt ID</b>	<a href="#">P48052</a>

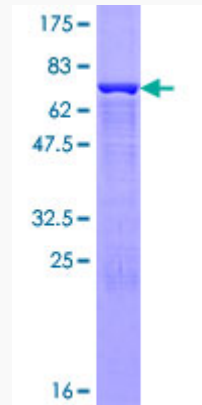
 Tel: 1-631-559-9269 1-516-512-3133

 Email: [info@creative-biomart.com](mailto:info@creative-biomart.com)  Fax: 1-631-938-8127

 45-1 Ramsey Road, Shirley, NY 11967, USA

**Quality Control**

**Testing:**



12.5% SDS-PAGE Stained with Coomassie Blue.

 Tel: 1-631-559-9269 1-516-512-3133

 Email: [info@creative-biomart.com](mailto:info@creative-biomart.com)  Fax: 1-631-938-8127

 45-1 Ramsey Road, Shirley, NY 11967, USA